



ANLAGENBAND

OKTOBER 2016

AUFTRAGGEBER

Stadt Wolfratshausen
Amt 2 Bauen und Umwelt

GUTACHTER

Dipl.-Ing. Christian Fahnberg
INGEVOST
Ingenieurbüro für Verkehrsuntersuchungen
im Orts- und Stadtbereich • Dipl.-Ing. Chr. Fahnberg • Planegg

BEARBEITUNG

Dipl.-Ing. (FH) Christian Sieder (Grafik+EDV)
Dipl.-Geogr. (LMU) Nikola Richter (Grafik+Design)

ANLAGEN

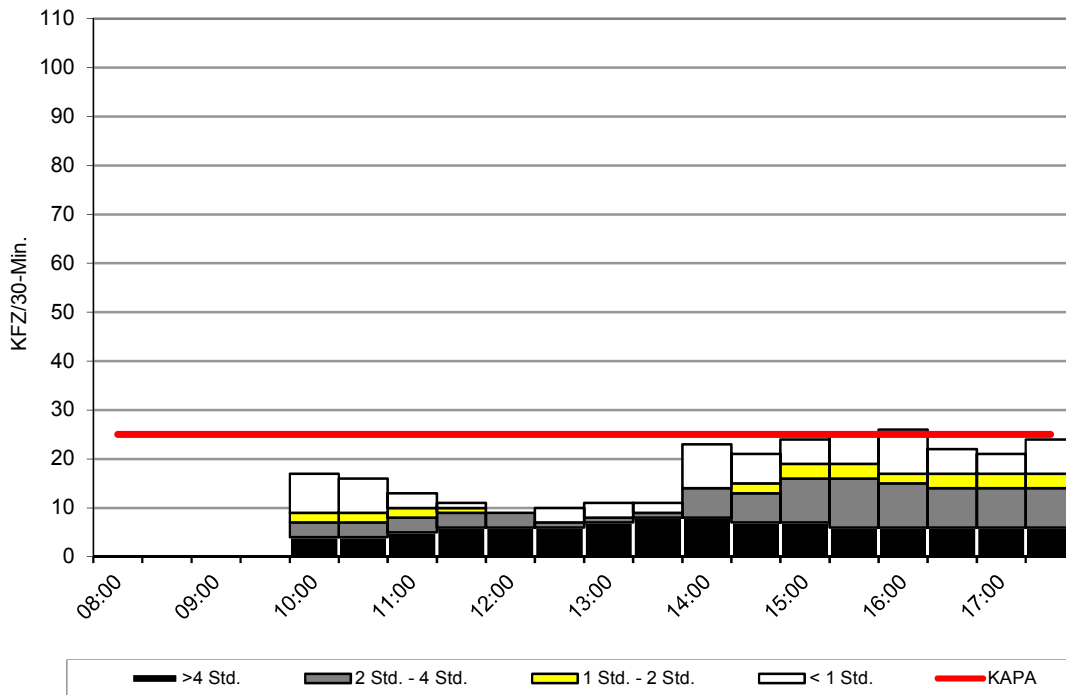
1. Einzelergebnisse der Parkraumerhebungen

P 1_1	Musikschule
P 1_2	Untermarkt nördlich Bahnhofstraße
P 2_1	Haderbräu
P 2_2	Heimatmuseum
P 2_3	Loisachufer Nord
P 3_1	Obermarkt/Untermarkt
P 3_2	Johannisgasse
P 3_3	Loisachufer Süd
P 4_1	Parkplatz Paradiesweg
P 4_2	Äußere Beuerberger Straße
P 4_3	Beuerberger Straße (nördl.)
P 4_4	Beuerberger Straße (südl.)
P 5_1	Hatzplatz
P 6_1	Lehrerparkplatz
P 6_2	Am Wasen
P 6_3	Parkplatz Königsdorfer Straße
P 7_1	P&R westl. Bahn
P 7_2	Karwendelstraße
P 7_3	Sauerlacher Straße (Finanzamt)
P 7_4	Sauerlacher Straße (Sparkasse)
P 8_1	Parkplatz Hinter Sparkasse
P 8_2	Hammerschmiedweg
P 9_1	Parkplatz Krankenhaus
P 9_2	Moosbauerweg
P 9_3	Sauerlacher Straße
P 10_1	P&R östlich Bahn
P 11_1	P&R westlich Bahn
P 12_1	Bahnhofstraße
P12_2	Bahnhofstraße
P 12_3	Am Floßkanal
P 13	Parkplatz Loisachhalle (Altstadt)

Stadt Wolfratshausen

Parkraumerhebung

Park-/ Stellplatz: P1_1 Musikschule
 Zähltag: Do., 29.09.2016
 Erfassungszeit: 10:00 Uhr - 18:00 Uhr
 Darstellung: KFZ
 Stellplatzangebot: 25
 Bewirtschaftung: Parkscheibe 2h

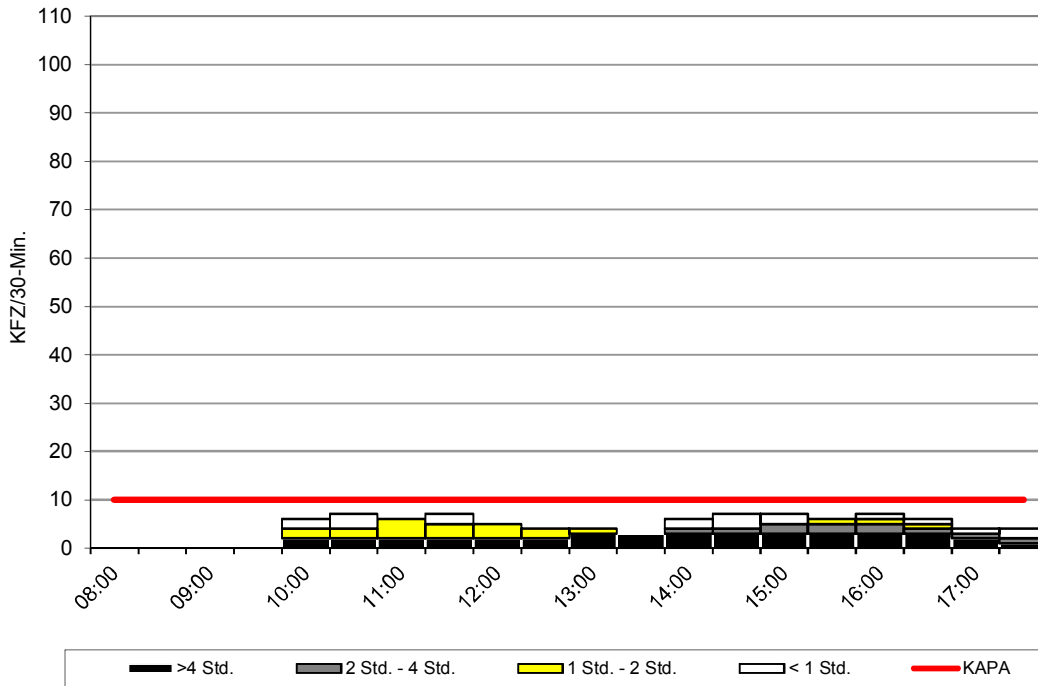


	Auslastung		davon Parkdauer							
			>4 Std.		2 Std. - 4 Std.		1 Std. - 2 Std.		< 1 Std.	
	abs.	rel.	abs.	rel.	abs.	rel.	abs.	rel.	abs.	rel.
08:00	0	0%	0	-%	0	-%	0	-%	0	-%
08:30	0	0%	0	-%	0	-%	0	-%	0	-%
09:00	0	0%	0	-%	0	-%	0	-%	0	-%
09:30	0	0%	0	-%	0	-%	0	-%	0	-%
10:00	17	68%	4	24%	3	18%	2	12%	8	47%
10:30	16	64%	4	25%	3	19%	2	13%	7	44%
11:00	13	52%	5	38%	3	23%	2	15%	3	23%
11:30	11	44%	6	55%	3	27%	1	9%	1	9%
12:00	9	36%	6	67%	3	33%	0	0%	0	0%
12:30	10	40%	6	60%	1	10%	0	0%	3	30%
13:00	11	44%	7	64%	1	9%	0	0%	3	27%
13:30	11	44%	8	73%	1	9%	0	0%	2	18%
14:00	23	92%	8	35%	6	26%	0	0%	9	39%
14:30	21	84%	7	33%	6	29%	2	10%	6	29%
15:00	24	96%	7	29%	9	38%	3	13%	5	21%
15:30	25	100%	6	24%	10	40%	3	12%	6	24%
16:00	26	104%	6	23%	9	35%	2	8%	9	35%
16:30	22	88%	6	27%	8	36%	3	14%	5	23%
17:00	21	84%	6	29%	8	38%	3	14%	4	19%
17:30	24	96%	6	25%	8	33%	3	13%	7	29%
durchschn.										
30-Min.-Wert	18	72%	6	33%	5	28%	2	11%	5	28%

Stadt Wolfratshausen

Parkraumerhebung

Park-/ Stellplatz: P1_2 Untermarkt (nördlich Bahnhofstr., teilweise Baustelle)
 Zähltag: Do., 29.09.2016
 Erfassungszeit: 10:00 Uhr - 18:00 Uhr
 Darstellung: KFZ
 Stellplatzangebot: 10
 Bewirtschaftung: Parkscheibe 2h

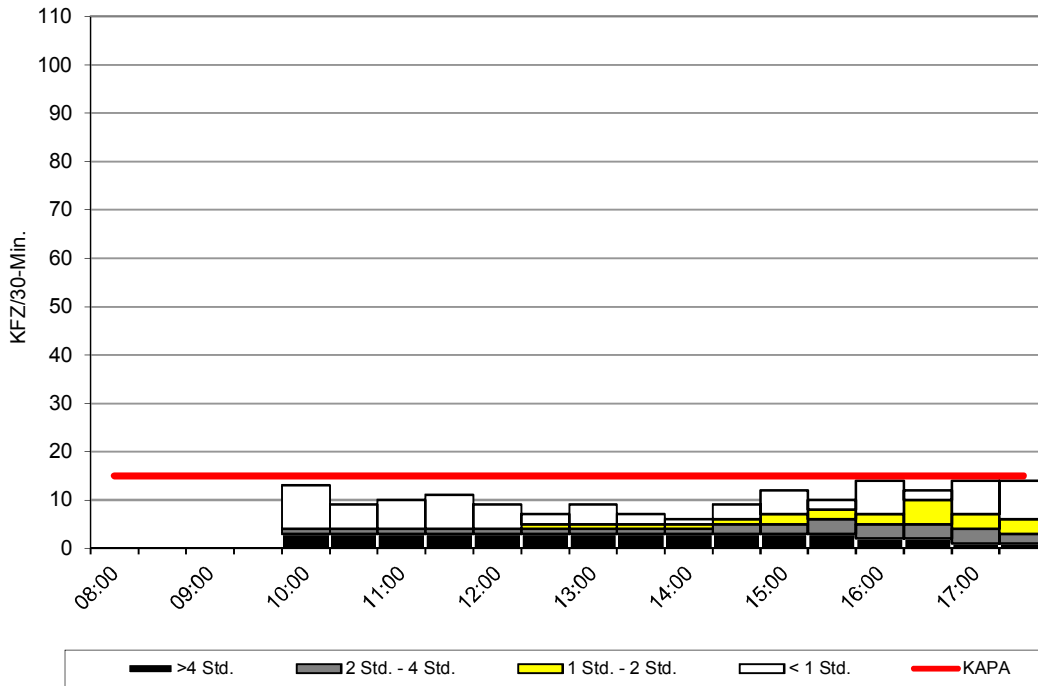


	Auslastung		davon Parkdauer							
			>4 Std.		2 Std. - 4 Std.		1 Std. - 2 Std.		< 1 Std.	
	abs.	rel.	abs.	rel.	abs.	rel.	abs.	rel.	abs.	rel.
08:00	0	0%	0	-%	0	-%	0	-%	0	-%
08:30	0	0%	0	-%	0	-%	0	-%	0	-%
09:00	0	0%	0	-%	0	-%	0	-%	0	-%
09:30	0	0%	0	-%	0	-%	0	-%	0	-%
10:00	6	60%	2	33%	0	0%	2	33%	2	33%
10:30	7	70%	2	29%	0	0%	2	29%	3	43%
11:00	6	60%	2	33%	0	0%	4	67%	0	0%
11:30	7	70%	2	29%	0	0%	3	43%	2	29%
12:00	5	50%	2	40%	0	0%	3	60%	0	0%
12:30	4	40%	2	50%	0	0%	2	50%	0	0%
13:00	4	40%	3	75%	0	0%	1	25%	0	0%
13:30	3	30%	3	100%	0	0%	0	0%	0	0%
14:00	6	60%	3	50%	1	17%	0	0%	2	33%
14:30	7	70%	3	43%	1	14%	0	0%	3	43%
15:00	7	70%	3	43%	2	29%	0	0%	2	29%
15:30	6	60%	3	50%	2	33%	1	17%	0	0%
16:00	7	70%	3	43%	2	29%	1	14%	1	14%
16:30	6	60%	3	50%	1	17%	1	17%	1	17%
17:00	4	40%	2	50%	1	25%	0	0%	1	25%
17:30	4	40%	1	25%	1	25%	0	0%	2	50%
durchschn. 30-Min.-Wert	6	60%	2	40%	1	20%	1	20%	1	20%

Stadt Wolfratshausen

Parkraumerhebung

Park-/ Stellplatz: P2_1 Haderbräu
 Zähltag: Do., 29.09.2016
 Erfassungszeit: 10:00 Uhr - 18:00 Uhr
 Darstellung: KFZ
 Stellplatzangebot: 15
 Bewirtschaftung: Parkschein (kostenpflichtig) 2h

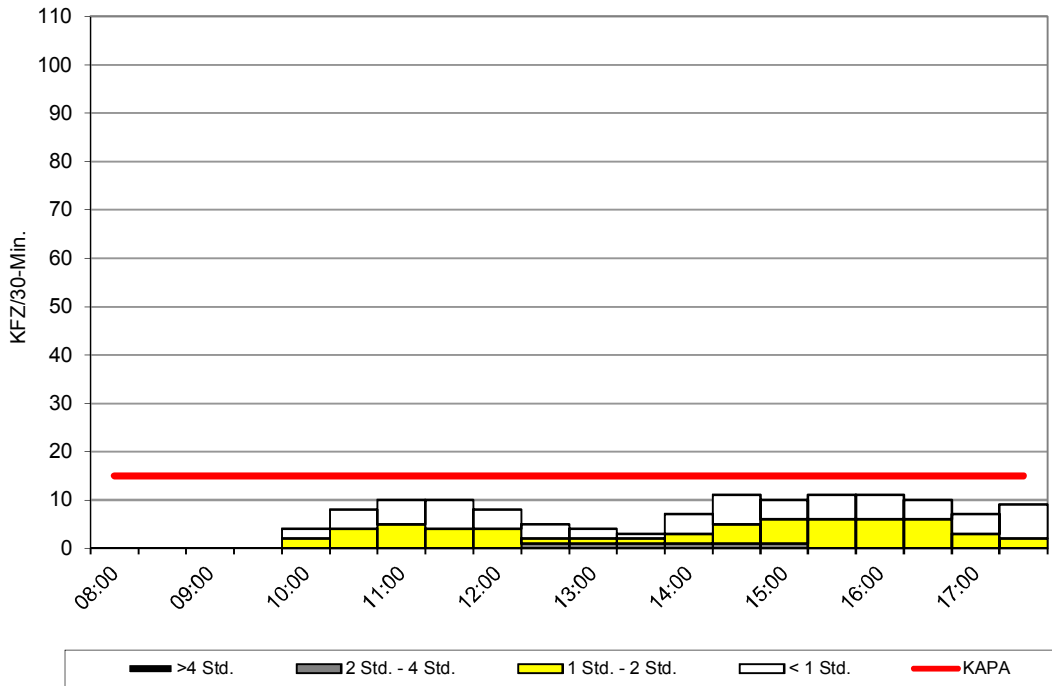


	Auslastung		davon Parkdauer							
			>4 Std.		2 Std. - 4 Std.		1 Std. - 2 Std.		< 1 Std.	
	abs.	rel.	abs.	rel.	abs.	rel.	abs.	rel.	abs.	rel.
08:00	0	0%	0	-%	0	-%	0	-%	0	-%
08:30	0	0%	0	-%	0	-%	0	-%	0	-%
09:00	0	0%	0	-%	0	-%	0	-%	0	-%
09:30	0	0%	0	-%	0	-%	0	-%	0	-%
10:00	13	87%	3	23%	1	8%	0	0%	9	69%
10:30	9	60%	3	33%	1	11%	0	0%	5	56%
11:00	10	67%	3	30%	1	10%	0	0%	6	60%
11:30	11	73%	3	27%	1	9%	0	0%	7	64%
12:00	9	60%	3	33%	1	11%	0	0%	5	56%
12:30	7	47%	3	43%	1	14%	1	14%	2	29%
13:00	9	60%	3	33%	1	11%	1	11%	4	44%
13:30	7	47%	3	43%	1	14%	1	14%	2	29%
14:00	6	40%	3	50%	1	17%	1	17%	1	17%
14:30	9	60%	3	33%	2	22%	1	11%	3	33%
15:00	12	80%	3	25%	2	17%	2	17%	5	42%
15:30	10	67%	3	30%	3	30%	2	20%	2	20%
16:00	14	93%	2	14%	3	21%	2	14%	7	50%
16:30	12	80%	2	17%	3	25%	5	42%	2	17%
17:00	14	93%	1	7%	3	21%	3	21%	7	50%
17:30	14	93%	1	7%	2	14%	3	21%	8	57%
durchschn. 30-Min.-Wert	10	67%	3	27%	2	18%	1	9%	5	45%

Stadt Wolftrathausen

Parkraumerhebung

Park-/ Stellplatz: P2_2 Heimatmuseum
 Zähltag: Do., 29.09.2016
 Erfassungszeit: 10:00 Uhr - 18:00 Uhr
 Darstellung: KFZ
 Stellplatzangebot: 15
 Bewirtschaftung: Parkzone mit Parkschein (kostenpflichtig) 2h

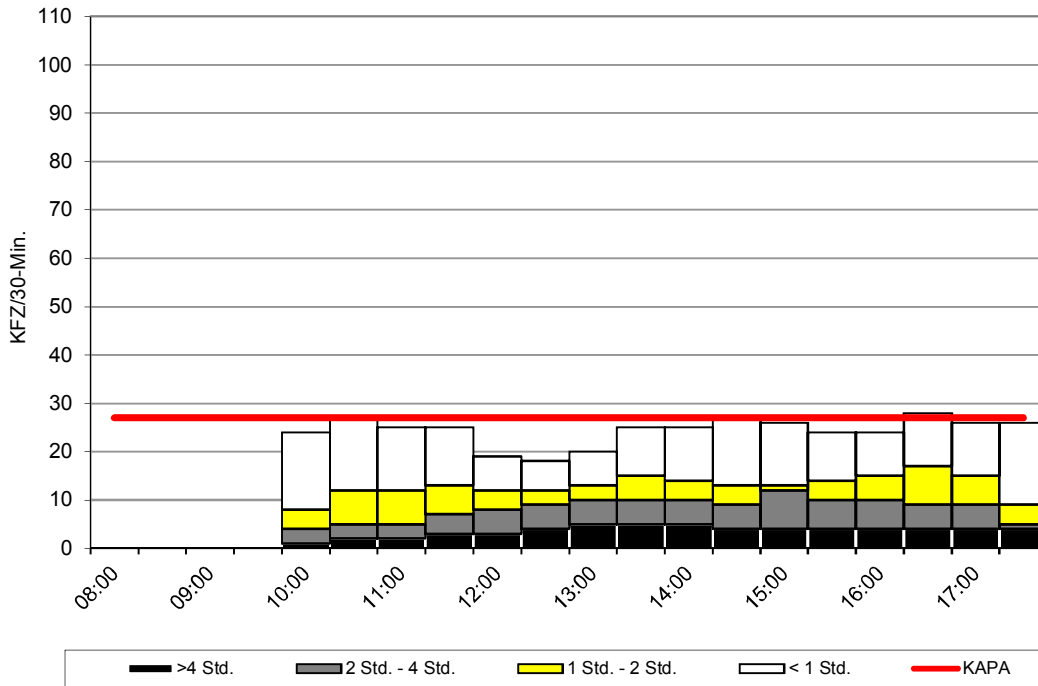


	Auslastung		davon Parkdauer							
			>4 Std.		2 Std. - 4 Std.		1 Std. - 2 Std.		< 1 Std.	
	abs.	rel.	abs.	rel.	abs.	rel.	abs.	rel.	abs.	rel.
08:00	0	0%	0	-%	0	-%	0	-%	0	-%
08:30	0	0%	0	-%	0	-%	0	-%	0	-%
09:00	0	0%	0	-%	0	-%	0	-%	0	-%
09:30	0	0%	0	-%	0	-%	0	-%	0	-%
10:00	4	27%	0	0%	0	0%	2	50%	2	50%
10:30	8	53%	0	0%	0	0%	4	50%	4	50%
11:00	10	67%	0	0%	0	0%	5	50%	5	50%
11:30	10	67%	0	0%	0	0%	4	40%	6	60%
12:00	8	53%	0	0%	0	0%	4	50%	4	50%
12:30	5	33%	0	0%	1	20%	1	20%	3	60%
13:00	4	27%	0	0%	1	25%	1	25%	2	50%
13:30	3	20%	0	0%	1	33%	1	33%	1	33%
14:00	7	47%	0	0%	1	14%	2	29%	4	57%
14:30	11	73%	0	0%	1	9%	4	36%	6	55%
15:00	10	67%	0	0%	1	10%	5	50%	4	40%
15:30	11	73%	0	0%	0	0%	6	55%	5	45%
16:00	11	73%	0	0%	0	0%	6	55%	5	45%
16:30	10	67%	0	0%	0	0%	6	60%	4	40%
17:00	7	47%	0	0%	0	0%	3	43%	4	57%
17:30	9	60%	0	0%	0	0%	2	22%	7	78%
durchschn. 30-Min.-Wert	8	53%	0	0%	0	0%	4	50%	4	50%

Stadt Wolftrathausen

Parkraumerhebung

Park-/ Stellplatz: P2_3 Loischufer Nord
 Zähltag: Do., 29.09.2016
 Erfassungszeit: 10:00 Uhr - 18:00 Uhr
 Darstellung: KFZ
 Stellplatzangebot: 27
 Bewirtschaftung: Parkzone mit Parkschein (kostenpflichtig) 2h

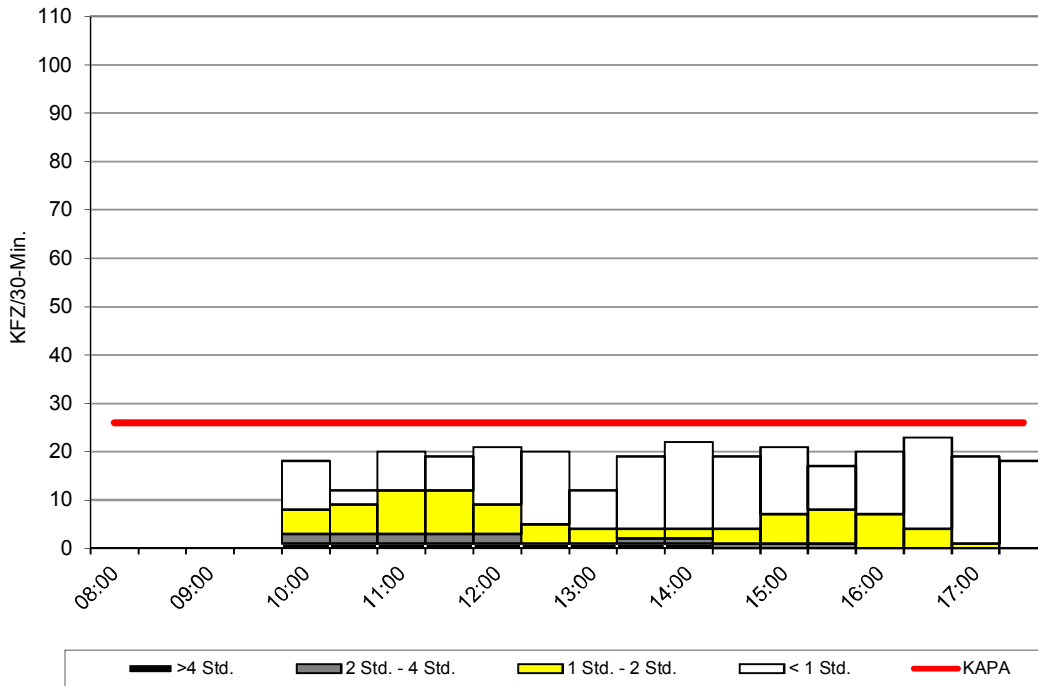


	Auslastung		davon Parkdauer							
			>4 Std.		2 Std. - 4 Std.		1 Std. - 2 Std.		< 1 Std.	
	abs.	rel.	abs.	rel.	abs.	rel.	abs.	rel.	abs.	rel.
08:00	0	0%	0	-%	0	-%	0	-%	0	-%
08:30	0	0%	0	-%	0	-%	0	-%	0	-%
09:00	0	0%	0	-%	0	-%	0	-%	0	-%
09:30	0	0%	0	-%	0	-%	0	-%	0	-%
10:00	24	89%	1	4%	3	13%	4	17%	16	67%
10:30	27	100%	2	7%	3	11%	7	26%	15	56%
11:00	25	93%	2	8%	3	12%	7	28%	13	52%
11:30	25	93%	3	12%	4	16%	6	24%	12	48%
12:00	19	70%	3	16%	5	26%	4	21%	7	37%
12:30	18	67%	4	22%	5	28%	3	17%	6	33%
13:00	20	74%	5	25%	5	25%	3	15%	7	35%
13:30	25	93%	5	20%	5	20%	5	20%	10	40%
14:00	25	93%	5	20%	5	20%	4	16%	11	44%
14:30	27	100%	4	15%	5	19%	4	15%	14	52%
15:00	26	96%	4	15%	8	31%	1	4%	13	50%
15:30	24	89%	4	17%	6	25%	4	17%	10	42%
16:00	24	89%	4	17%	6	25%	5	21%	9	38%
16:30	28	104%	4	14%	5	18%	8	29%	11	39%
17:00	26	96%	4	15%	5	19%	6	23%	11	42%
17:30	26	96%	4	15%	1	4%	4	15%	17	65%
durchschn. 30-Min.-Wert	24	89%	4	16%	5	20%	5	20%	11	44%

Stadt Wolfratshausen

Parkraumerhebung

Park-/ Stellplatz: P3_1 Obermarkt/Untermarkt
 Zähltag: Do., 29.09.2016
 Erfassungszeit: 10:00 Uhr - 18:00 Uhr
 Darstellung: KFZ
 Stellplatzangebot: 26
 Bewirtschaftung: Parkzone mit Parkschein (kostenpflichtig) 1h

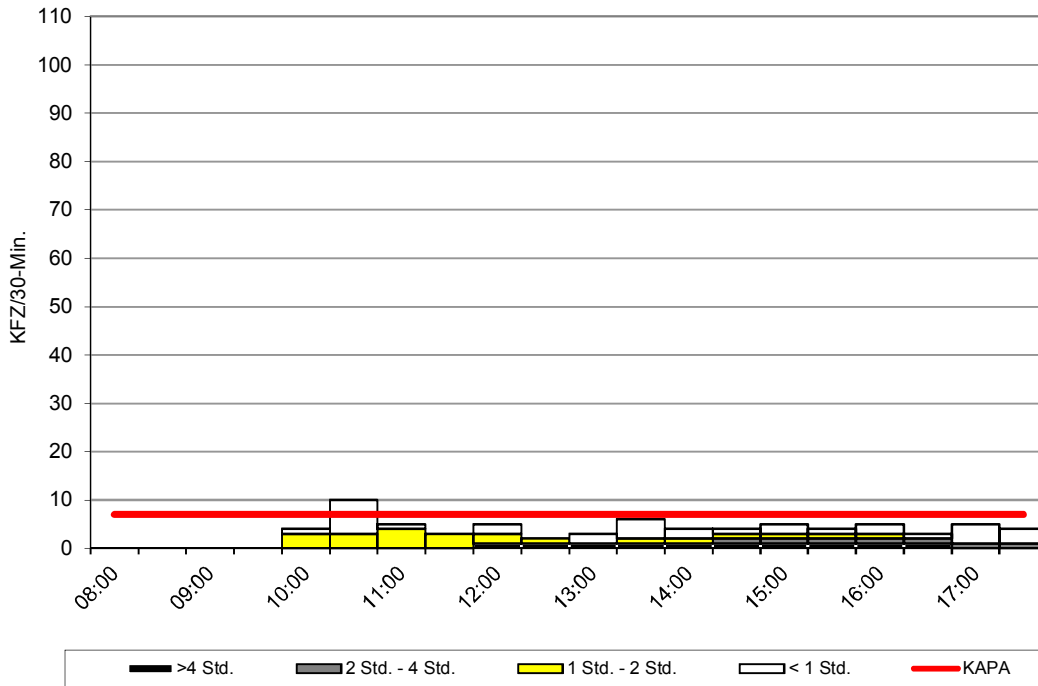


	Auslastung		davon Parkdauer							
			>4 Std.		2 Std. - 4 Std.		1 Std. - 2 Std.		< 1 Std.	
	abs.	rel.	abs.	rel.	abs.	rel.	abs.	rel.	abs.	rel.
08:00	0	0%	0	-%	0	-%	0	-%	0	-%
08:30	0	0%	0	-%	0	-%	0	-%	0	-%
09:00	0	0%	0	-%	0	-%	0	-%	0	-%
09:30	0	0%	0	-%	0	-%	0	-%	0	-%
10:00	18	69%	1	6%	2	11%	5	28%	10	56%
10:30	12	46%	1	8%	2	17%	6	50%	3	25%
11:00	20	77%	1	5%	2	10%	9	45%	8	40%
11:30	19	73%	1	5%	2	11%	9	47%	7	37%
12:00	21	81%	1	5%	2	10%	6	29%	12	57%
12:30	20	77%	1	5%	0	0%	4	20%	15	75%
13:00	12	46%	1	8%	0	0%	3	25%	8	67%
13:30	19	73%	1	5%	1	5%	2	11%	15	79%
14:00	22	85%	1	5%	1	5%	2	9%	18	82%
14:30	19	73%	0	0%	1	5%	3	16%	15	79%
15:00	21	81%	0	0%	1	5%	6	29%	14	67%
15:30	17	65%	0	0%	1	6%	7	41%	9	53%
16:00	20	77%	0	0%	0	0%	7	35%	13	65%
16:30	23	88%	0	0%	0	0%	4	17%	19	83%
17:00	19	73%	0	0%	0	0%	1	5%	18	95%
17:30	18	69%	0	0%	0	0%	0	0%	18	100%
durchschn. 30-Min.-Wert	19	73%	1	5%	1	5%	5	25%	13	65%

Stadt Wolftrathausen

Parkraumerhebung

Park-/ Stellplatz: P3_2 Johannissgasse
 Zähltag: Do., 29.09.2016
 Erfassungszeit: 10:00 Uhr - 18:00 Uhr
 Darstellung: KFZ
 Stellplatzangebot: 7
 Bewirtschaftung: Parkschein (kostenpflichtig) 1h

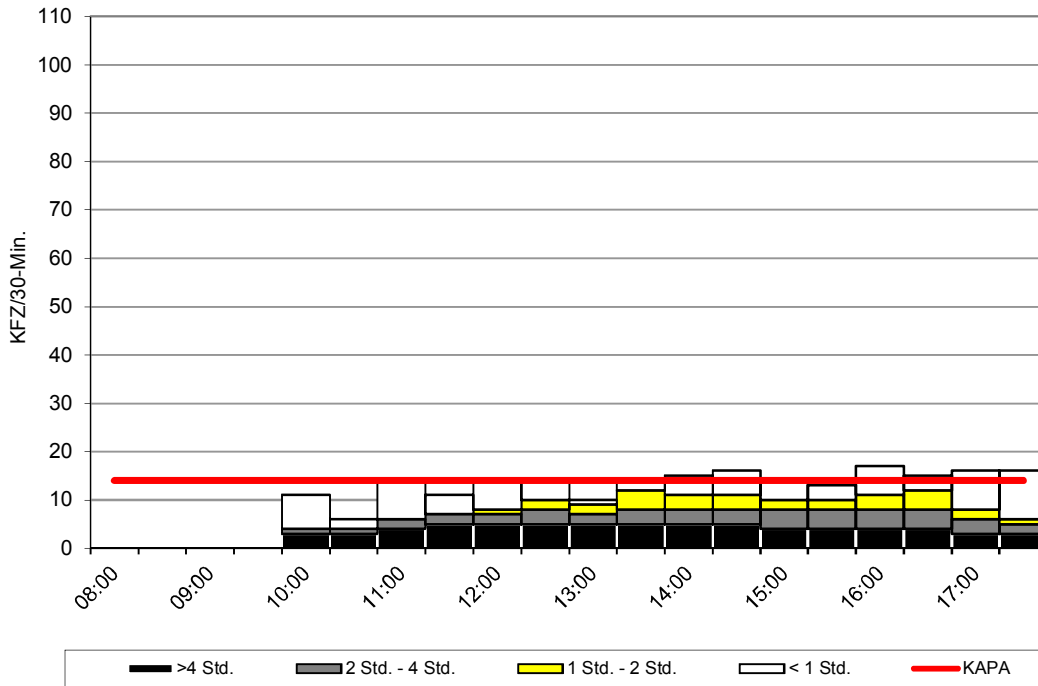


	Auslastung		davon Parkdauer							
			>4 Std.		2 Std. - 4 Std.		1 Std. - 2 Std.		< 1 Std.	
	abs.	rel.	abs.	rel.	abs.	rel.	abs.	rel.	abs.	rel.
08:00	0	0%	0	-%	0	-%	0	-%	0	-%
08:30	0	0%	0	-%	0	-%	0	-%	0	-%
09:00	0	0%	0	-%	0	-%	0	-%	0	-%
09:30	0	0%	0	-%	0	-%	0	-%	0	-%
10:00	4	57%	0	0%	0	0%	3	75%	1	25%
10:30	10	143%	0	0%	0	0%	3	30%	7	70%
11:00	5	71%	0	0%	0	0%	4	80%	1	20%
11:30	3	43%	0	0%	0	0%	3	100%	0	0%
12:00	5	71%	1	20%	0	0%	2	40%	2	40%
12:30	2	29%	1	50%	0	0%	1	50%	0	0%
13:00	3	43%	1	33%	0	0%	0	0%	2	67%
13:30	6	86%	1	17%	0	0%	1	17%	4	67%
14:00	4	57%	1	25%	0	0%	1	25%	2	50%
14:30	4	57%	1	25%	1	25%	1	25%	1	25%
15:00	5	71%	1	20%	1	20%	1	20%	2	40%
15:30	4	57%	1	25%	1	25%	1	25%	1	25%
16:00	5	71%	1	20%	1	20%	1	20%	2	40%
16:30	3	43%	1	33%	1	33%	0	0%	1	33%
17:00	5	71%	0	0%	1	20%	0	0%	4	80%
17:30	4	57%	0	0%	1	25%	0	0%	3	75%
durchschn. 30-Min.-Wert	5	71%	1	25%	0	0%	1	25%	2	50%

Stadt Wolfratshausen

Parkraumerhebung

Park-/ Stellplatz: P3_3 Loisachufer Süd
 Zähltag: Do., 29.09.2016
 Erfassungszeit: 10:00 Uhr - 18:00 Uhr
 Darstellung: KFZ
 Stellplatzangebot: 14
 Bewirtschaftung: Parkschein (kostenpflichtig) 2h

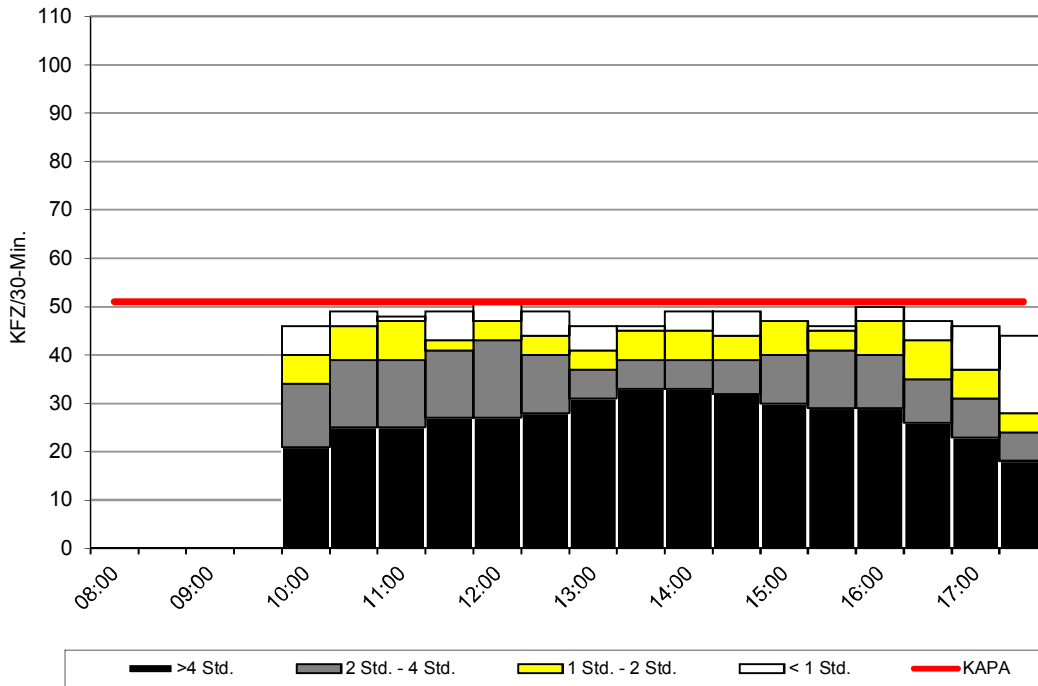


	Auslastung		davon Parkdauer							
			>4 Std.		2 Std. - 4 Std.		1 Std. - 2 Std.		< 1 Std.	
	abs.	rel.	abs.	rel.	abs.	rel.	abs.	rel.	abs.	rel.
08:00	0	0%	0	-%	0	-%	0	-%	0	-%
08:30	0	0%	0	-%	0	-%	0	-%	0	-%
09:00	0	0%	0	-%	0	-%	0	-%	0	-%
09:30	0	0%	0	-%	0	-%	0	-%	0	-%
10:00	11	79%	3	27%	1	9%	0	0%	7	64%
10:30	6	43%	3	50%	1	17%	0	0%	2	33%
11:00	14	100%	4	29%	2	14%	0	0%	8	57%
11:30	11	79%	5	45%	2	18%	0	0%	4	36%
12:00	14	100%	5	36%	2	14%	1	7%	6	43%
12:30	14	100%	5	36%	3	21%	2	14%	4	29%
13:00	10	71%	5	50%	2	20%	2	20%	1	10%
13:30	14	100%	5	36%	3	21%	4	29%	2	14%
14:00	15	107%	5	33%	3	20%	3	20%	4	27%
14:30	16	114%	5	31%	3	19%	3	19%	5	31%
15:00	14	100%	4	29%	4	29%	2	14%	4	29%
15:30	13	93%	4	31%	4	31%	2	15%	3	23%
16:00	17	121%	4	24%	4	24%	3	18%	6	35%
16:30	15	107%	4	27%	4	27%	4	27%	3	20%
17:00	16	114%	3	19%	3	19%	2	13%	8	50%
17:30	16	114%	3	19%	2	13%	1	6%	10	63%
durchschn. 30-Min.-Wert	14	100%	4	29%	3	21%	2	14%	5	36%

Stadt Wolfratshausen

Parkraumerhebung

Park-/ Stellplatz: P4_1 Parkplatz Paradiesweg
 Zähltag: Do., 29.09.2016
 Erfassungszeit: 10:00 Uhr - 18:00 Uhr
 Darstellung: KFZ
 Stellplatzangebot: 51
 Bewirtschaftung: ohne Einschränkung

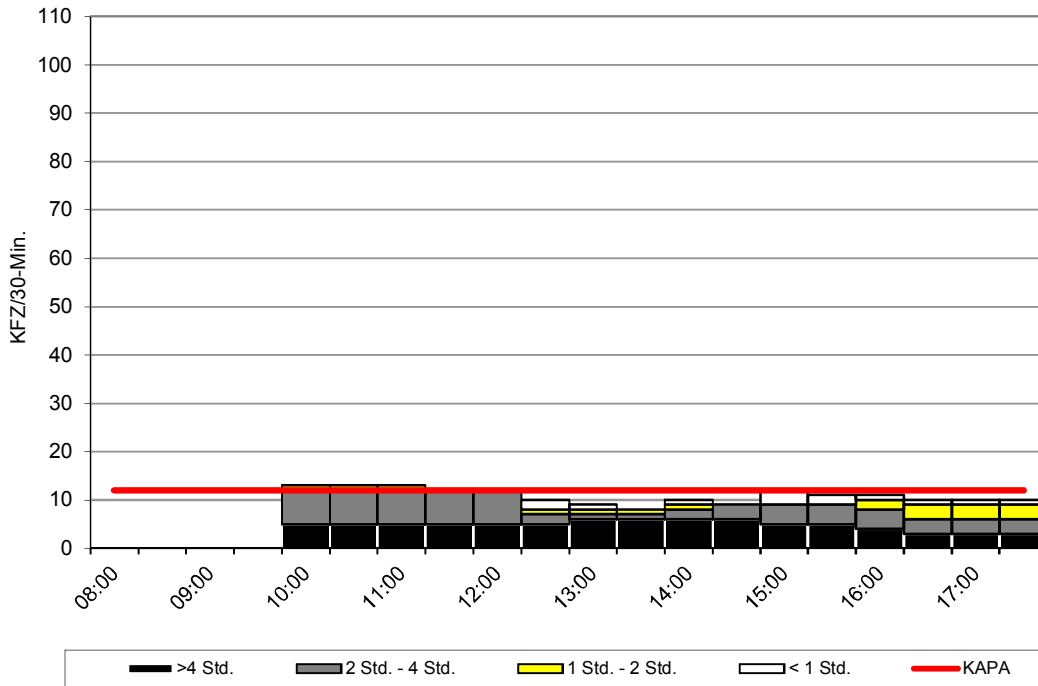


	Auslastung		davon Parkdauer							
			>4 Std.		2 Std. - 4 Std.		1 Std. - 2 Std.		< 1 Std.	
	abs.	rel.	abs.	rel.	abs.	rel.	abs.	rel.	abs.	rel.
08:00	0	0%	0	-%	0	-%	0	-%	0	-%
08:30	0	0%	0	-%	0	-%	0	-%	0	-%
09:00	0	0%	0	-%	0	-%	0	-%	0	-%
09:30	0	0%	0	-%	0	-%	0	-%	0	-%
10:00	46	90%	21	46%	13	28%	6	13%	6	13%
10:30	49	96%	25	51%	14	29%	7	14%	3	6%
11:00	48	94%	25	52%	14	29%	8	17%	1	2%
11:30	49	96%	27	55%	14	29%	2	4%	6	12%
12:00	51	100%	27	53%	16	31%	4	8%	4	8%
12:30	49	96%	28	57%	12	24%	4	8%	5	10%
13:00	46	90%	31	67%	6	13%	4	9%	5	11%
13:30	46	90%	33	72%	6	13%	6	13%	1	2%
14:00	49	96%	33	67%	6	12%	6	12%	4	8%
14:30	49	96%	32	65%	7	14%	5	10%	5	10%
15:00	47	92%	30	64%	10	21%	7	15%	0	0%
15:30	46	90%	29	63%	12	26%	4	9%	1	2%
16:00	50	98%	29	58%	11	22%	7	14%	3	6%
16:30	47	92%	26	55%	9	19%	8	17%	4	9%
17:00	46	90%	23	50%	8	17%	6	13%	9	20%
17:30	44	86%	18	41%	6	14%	4	9%	16	36%
durchschn. 30-Min.-Wert	48	94%	27	56%	10	21%	6	13%	5	10%

Stadt Wolfratshausen

Parkraumerhebung

Park-/ Stellplatz: P4_2 Äußere Beuerberger Str.
 Zähltag: Do., 29.09.2016
 Erfassungszeit: 10:00 Uhr - 18:00 Uhr
 Darstellung: KFZ
 Stellplatzangebot: 12
 Bewirtschaftung: ohne Einschränkung

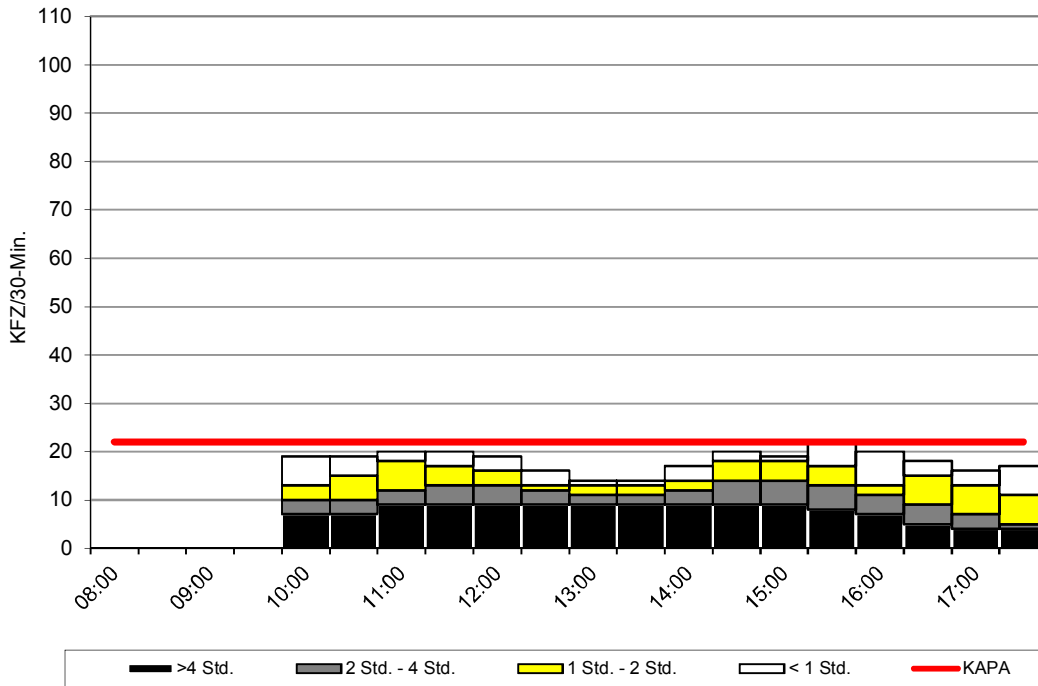


	Auslastung		davon Parkdauer							
			>4 Std.		2 Std. - 4 Std.		1 Std. - 2 Std.		< 1 Std.	
	abs.	rel.	abs.	rel.	abs.	rel.	abs.	rel.	abs.	rel.
08:00	0	0%	0	-%	0	-%	0	-%	0	-%
08:30	0	0%	0	-%	0	-%	0	-%	0	-%
09:00	0	0%	0	-%	0	-%	0	-%	0	-%
09:30	0	0%	0	-%	0	-%	0	-%	0	-%
10:00	13	108%	5	38%	7	54%	1	8%	0	0%
10:30	13	108%	5	38%	7	54%	1	8%	0	0%
11:00	13	108%	5	38%	7	54%	1	8%	0	0%
11:30	12	100%	5	42%	7	58%	0	0%	0	0%
12:00	12	100%	5	42%	7	58%	0	0%	0	0%
12:30	10	83%	5	50%	2	20%	1	10%	2	20%
13:00	9	75%	6	67%	1	11%	1	11%	1	11%
13:30	8	67%	6	75%	1	13%	1	13%	0	0%
14:00	10	83%	6	60%	2	20%	1	10%	1	10%
14:30	9	75%	6	67%	3	33%	0	0%	0	0%
15:00	12	100%	5	42%	4	33%	0	0%	3	25%
15:30	11	92%	5	45%	4	36%	0	0%	2	18%
16:00	11	92%	4	36%	4	36%	2	18%	1	9%
16:30	10	83%	3	30%	3	30%	3	30%	1	10%
17:00	10	83%	3	30%	3	30%	3	30%	1	10%
17:30	10	83%	3	30%	3	30%	3	30%	1	10%
durchschn. 30-Min.-Wert	11	92%	5	45%	4	36%	1	9%	1	9%

Stadt Wolfratshausen

Parkraumerhebung

Park-/ Stellplatz: P4_3 Beuerberger Str. (nördlicher Teilabschnitt)
 Zähltag: Do., 29.09.2016
 Erfassungszeit: 10:00 Uhr - 18:00 Uhr
 Darstellung: KFZ
 Stellplatzangebot: 22
 Bewirtschaftung: Parkscheibe 2h

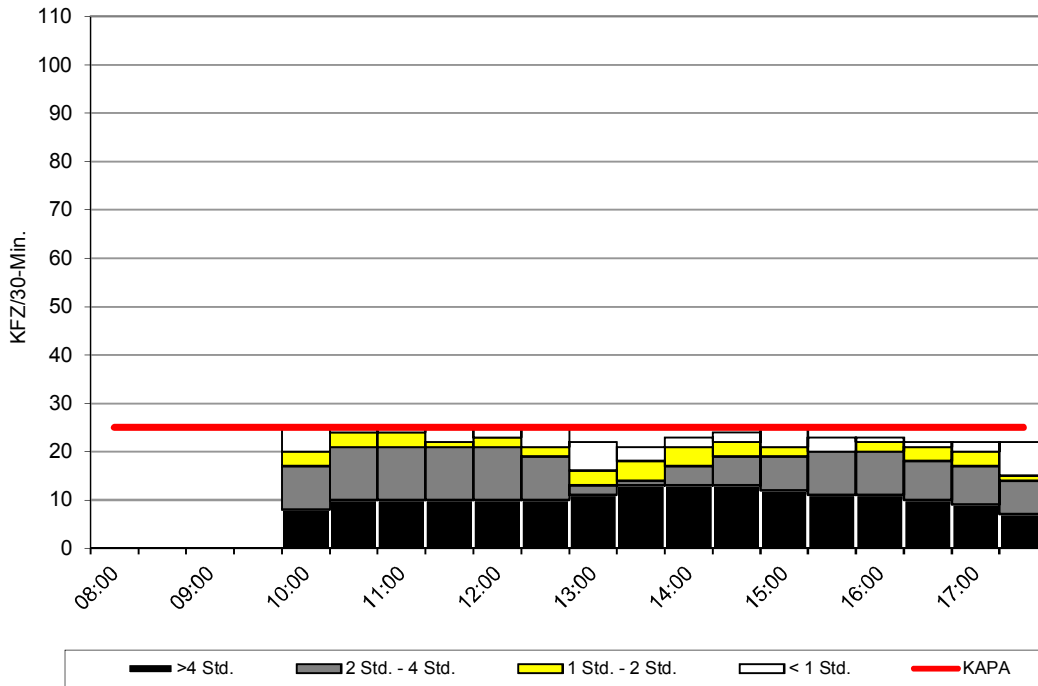


	Auslastung		davon Parkdauer							
			>4 Std.		2 Std. - 4 Std.		1 Std. - 2 Std.		< 1 Std.	
	abs.	rel.	abs.	rel.	abs.	rel.	abs.	rel.	abs.	rel.
08:00	0	0%	0	-%	0	-%	0	-%	0	-%
08:30	0	0%	0	-%	0	-%	0	-%	0	-%
09:00	0	0%	0	-%	0	-%	0	-%	0	-%
09:30	0	0%	0	-%	0	-%	0	-%	0	-%
10:00	19	86%	7	37%	3	16%	3	16%	6	32%
10:30	19	86%	7	37%	3	16%	5	26%	4	21%
11:00	20	91%	9	45%	3	15%	6	30%	2	10%
11:30	20	91%	9	45%	4	20%	4	20%	3	15%
12:00	19	86%	9	47%	4	21%	3	16%	3	16%
12:30	16	73%	9	56%	3	19%	1	6%	3	19%
13:00	14	64%	9	64%	2	14%	2	14%	1	7%
13:30	14	64%	9	64%	2	14%	2	14%	1	7%
14:00	17	77%	9	53%	3	18%	2	12%	3	18%
14:30	20	91%	9	45%	5	25%	4	20%	2	10%
15:00	19	86%	9	47%	5	26%	4	21%	1	5%
15:30	22	100%	8	36%	5	23%	4	18%	5	23%
16:00	20	91%	7	35%	4	20%	2	10%	7	35%
16:30	18	82%	5	28%	4	22%	6	33%	3	17%
17:00	16	73%	4	25%	3	19%	6	38%	3	19%
17:30	17	77%	4	24%	1	6%	6	35%	6	35%
durchschn. 30-Min.-Wert	18	82%	8	44%	3	17%	4	22%	3	17%

Stadt Wolfratshausen

Parkraumerhebung

Park-/ Stellplatz: P4_4 Beuerberger Str. (südlicher Teilabschnitt)
 Zähltag: Do., 29.09.2016
 Erfassungszeit: 10:00 Uhr - 18:00 Uhr
 Darstellung: KFZ
 Stellplatzangebot: 25
 Bewirtschaftung: ohne Einschränkung

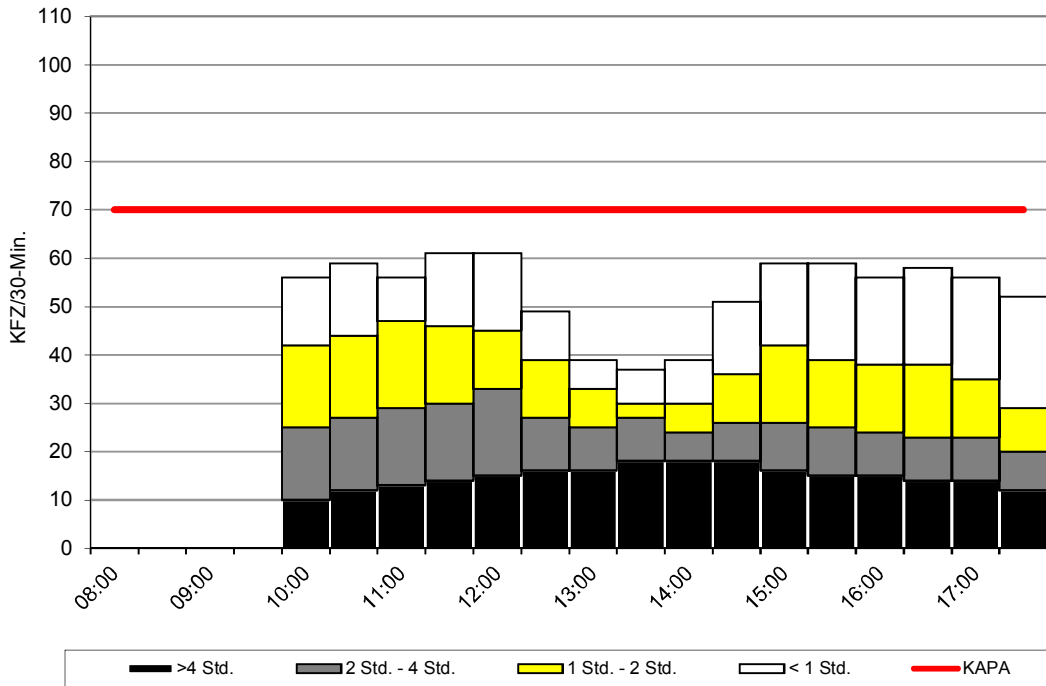


	Auslastung		davon Parkdauer							
			>4 Std.		2 Std. - 4 Std.		1 Std. - 2 Std.		< 1 Std.	
	abs.	rel.	abs.	rel.	abs.	rel.	abs.	rel.	abs.	rel.
08:00	0	0%	0	-%	0	-%	0	-%	0	-%
08:30	0	0%	0	-%	0	-%	0	-%	0	-%
09:00	0	0%	0	-%	0	-%	0	-%	0	-%
09:30	0	0%	0	-%	0	-%	0	-%	0	-%
10:00	25	100%	8	32%	9	36%	3	12%	5	20%
10:30	25	100%	10	40%	11	44%	3	12%	1	4%
11:00	25	100%	10	40%	11	44%	3	12%	1	4%
11:30	25	100%	10	40%	11	44%	1	4%	3	12%
12:00	25	100%	10	40%	11	44%	2	8%	2	8%
12:30	25	100%	10	40%	9	36%	2	8%	4	16%
13:00	22	88%	11	50%	2	9%	3	14%	6	27%
13:30	21	84%	13	62%	1	5%	4	19%	3	14%
14:00	23	92%	13	57%	4	17%	4	17%	2	9%
14:30	24	96%	13	54%	6	25%	3	13%	2	8%
15:00	25	100%	12	48%	7	28%	2	8%	4	16%
15:30	23	92%	11	48%	9	39%	0	0%	3	13%
16:00	23	92%	11	48%	9	39%	2	9%	1	4%
16:30	22	88%	10	45%	8	36%	3	14%	1	5%
17:00	22	88%	9	41%	8	36%	3	14%	2	9%
17:30	22	88%	7	32%	7	32%	1	5%	7	32%
durchschn. 30-Min.-Wert	24	96%	11	46%	8	33%	2	8%	3	13%

Stadt Wolfratshausen

Parkraumerhebung

Park-/ Stellplatz: P5_1 Hatzplatz
 Zähltag: Do., 29.09.2016
 Erfassungszeit: 10:00 Uhr - 18:00 Uhr
 Darstellung: KFZ
 Stellplatzangebot: 70
 Bewirtschaftung: Parkschein (kostenpflichtig)

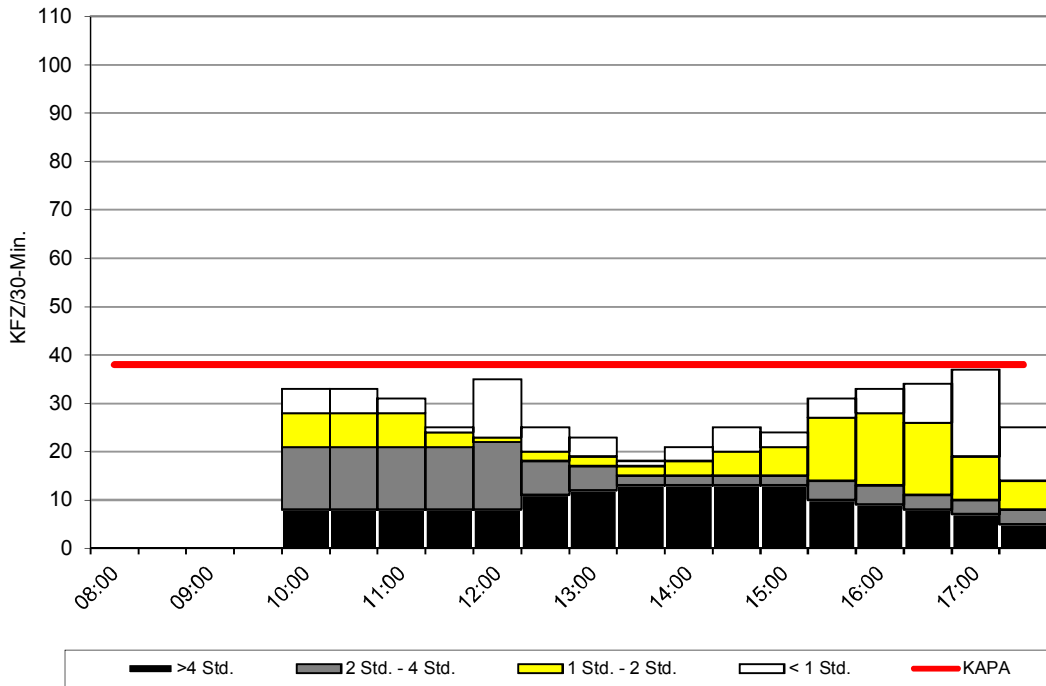


	Auslastung		davon Parkdauer							
			>4 Std.		2 Std. - 4 Std.		1 Std. - 2 Std.		< 1 Std.	
	abs.	rel.	abs.	rel.	abs.	rel.	abs.	rel.	abs.	rel.
08:00	0	0%	0	-%	0	-%	0	-%	0	-%
08:30	0	0%	0	-%	0	-%	0	-%	0	-%
09:00	0	0%	0	-%	0	-%	0	-%	0	-%
09:30	0	0%	0	-%	0	-%	0	-%	0	-%
10:00	56	80%	10	18%	15	27%	17	30%	14	25%
10:30	59	84%	12	20%	15	25%	17	29%	15	25%
11:00	56	80%	13	23%	16	29%	18	32%	9	16%
11:30	61	87%	14	23%	16	26%	16	26%	15	25%
12:00	61	87%	15	25%	18	30%	12	20%	16	26%
12:30	49	70%	16	33%	11	22%	12	24%	10	20%
13:00	39	56%	16	41%	9	23%	8	21%	6	15%
13:30	37	53%	18	49%	9	24%	3	8%	7	19%
14:00	39	56%	18	46%	6	15%	6	15%	9	23%
14:30	51	73%	18	35%	8	16%	10	20%	15	29%
15:00	59	84%	16	27%	10	17%	16	27%	17	29%
15:30	59	84%	15	25%	10	17%	14	24%	20	34%
16:00	56	80%	15	27%	9	16%	14	25%	18	32%
16:30	58	83%	14	24%	9	16%	15	26%	20	34%
17:00	56	80%	14	25%	9	16%	12	21%	21	38%
17:30	52	74%	12	23%	8	15%	9	17%	23	44%
durchschn. 30-Min.-Wert	53	76%	15	28%	11	21%	12	23%	15	28%

Stadt Wolfratshausen

Parkraumerhebung

Park-/ Stellplatz: P6_1 Lehrerparkplatz
 Zähltag: Do., 29.09.2016
 Erfassungszeit: 10:00 Uhr - 18:00 Uhr
 Darstellung: KFZ
 Stellplatzangebot: 38
 Bewirtschaftung: Parkscheibe 2h ab 14 Uhr

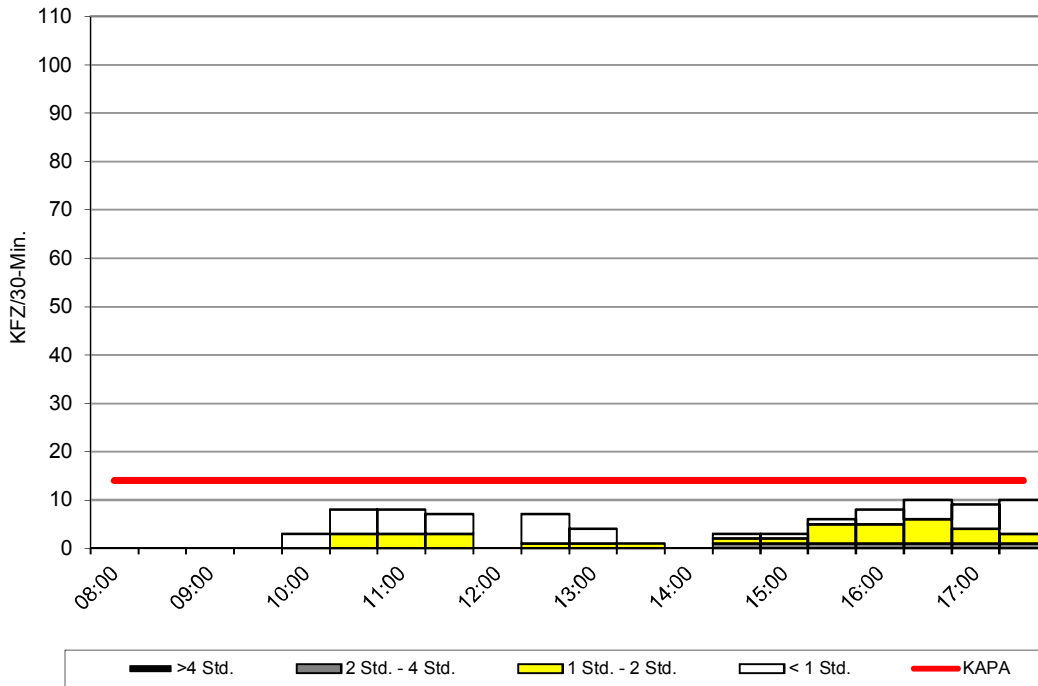


	Auslastung		davon Parkdauer							
			>4 Std.		2 Std. - 4 Std.		1 Std. - 2 Std.		< 1 Std.	
	abs.	rel.	abs.	rel.	abs.	rel.	abs.	rel.	abs.	rel.
08:00	0	0%	0	-%	0	-%	0	-%	0	-%
08:30	0	0%	0	-%	0	-%	0	-%	0	-%
09:00	0	0%	0	-%	0	-%	0	-%	0	-%
09:30	0	0%	0	-%	0	-%	0	-%	0	-%
10:00	33	87%	8	24%	13	39%	7	21%	5	15%
10:30	33	87%	8	24%	13	39%	7	21%	5	15%
11:00	31	82%	8	26%	13	42%	7	23%	3	10%
11:30	25	66%	8	32%	13	52%	3	12%	1	4%
12:00	35	92%	8	23%	14	40%	1	3%	12	34%
12:30	25	66%	11	44%	7	28%	2	8%	5	20%
13:00	23	61%	12	52%	5	22%	2	9%	4	17%
13:30	18	47%	13	72%	2	11%	2	11%	1	6%
14:00	21	55%	13	62%	2	10%	3	14%	3	14%
14:30	25	66%	13	52%	2	8%	5	20%	5	20%
15:00	24	63%	13	54%	2	8%	6	25%	3	13%
15:30	31	82%	10	32%	4	13%	13	42%	4	13%
16:00	33	87%	9	27%	4	12%	15	45%	5	15%
16:30	34	89%	8	24%	3	9%	15	44%	8	24%
17:00	37	97%	7	19%	3	8%	9	24%	18	49%
17:30	25	66%	5	20%	3	12%	6	24%	11	44%
durchschn. 30-Min.-Wert	28	74%	10	36%	6	21%	6	21%	6	21%

Stadt Wolftrathausen

Parkraumerhebung

Park-/ Stellplatz: P6_2 Am Wasen (teilweise Baustelle)
 Zähltag: Do., 29.09.2016
 Erfassungszeit: 10:00 Uhr - 18:00 Uhr
 Darstellung: KFZ
 Stellplatzangebot: 14
 Bewirtschaftung: Parkscheibe 1h

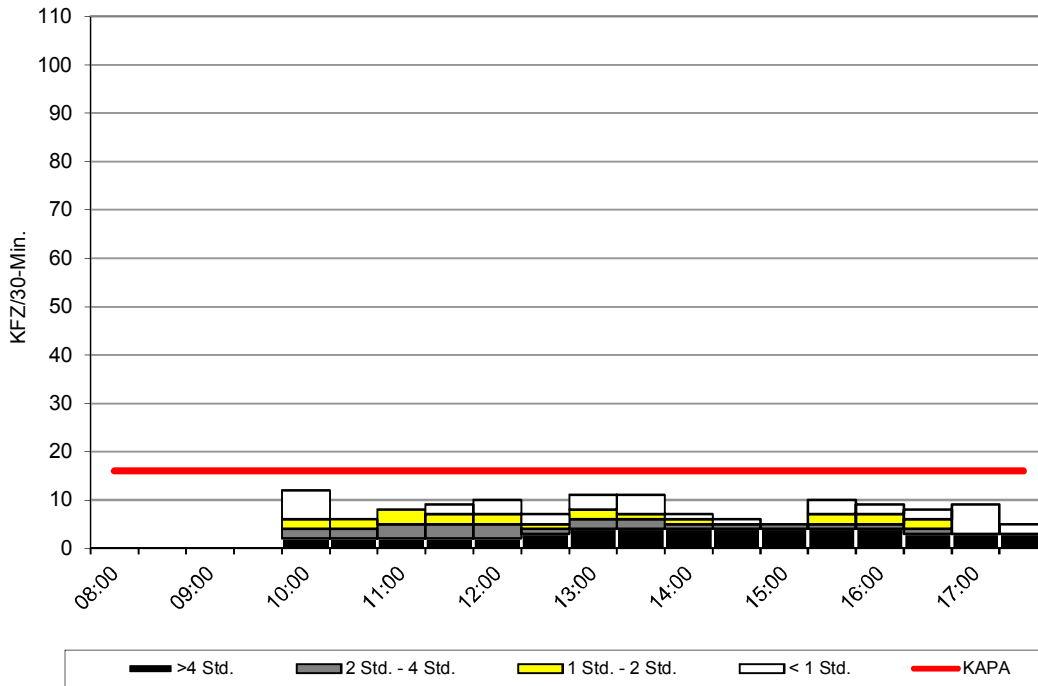


	Auslastung		davon Parkdauer							
			>4 Std.		2 Std. - 4 Std.		1 Std. - 2 Std.		< 1 Std.	
	abs.	rel.	abs.	rel.	abs.	rel.	abs.	rel.	abs.	rel.
08:00	0	0%	0	-%	0	-%	0	-%	0	-%
08:30	0	0%	0	-%	0	-%	0	-%	0	-%
09:00	0	0%	0	-%	0	-%	0	-%	0	-%
09:30	0	0%	0	-%	0	-%	0	-%	0	-%
10:00	3	21%	0	0%	0	0%	0	0%	3	100%
10:30	8	57%	0	0%	0	0%	3	38%	5	63%
11:00	8	57%	0	0%	0	0%	3	38%	5	63%
11:30	7	50%	0	0%	0	0%	3	43%	4	57%
12:00	0	0%	0	-%	0	-%	0	-%	0	-%
12:30	7	50%	0	0%	0	0%	1	14%	6	86%
13:00	4	29%	0	0%	0	0%	1	25%	3	75%
13:30	1	7%	0	0%	0	0%	1	100%	0	0%
14:00	0	0%	0	-%	0	-%	0	-%	0	-%
14:30	3	21%	0	0%	1	33%	1	33%	1	33%
15:00	3	21%	0	0%	1	33%	1	33%	1	33%
15:30	6	43%	0	0%	1	17%	4	67%	1	17%
16:00	8	57%	0	0%	1	13%	4	50%	3	38%
16:30	10	71%	0	0%	1	10%	5	50%	4	40%
17:00	9	64%	0	0%	1	11%	3	33%	5	56%
17:30	10	71%	0	0%	1	10%	2	20%	7	70%
durchschn. 30-Min.-Wert	5	36%	0	0%	0	0%	2	40%	3	60%

Stadt Wolfratshausen

Parkraumerhebung

Park-/ Stellplatz: P6_3 Parkplatz Königsdorfer Str.
 Zähltag: Do., 29.09.2016
 Erfassungszeit: 10:00 Uhr - 18:00 Uhr
 Darstellung: KFZ
 Stellplatzangebot: 16
 Bewirtschaftung: Parkscheibe 3h

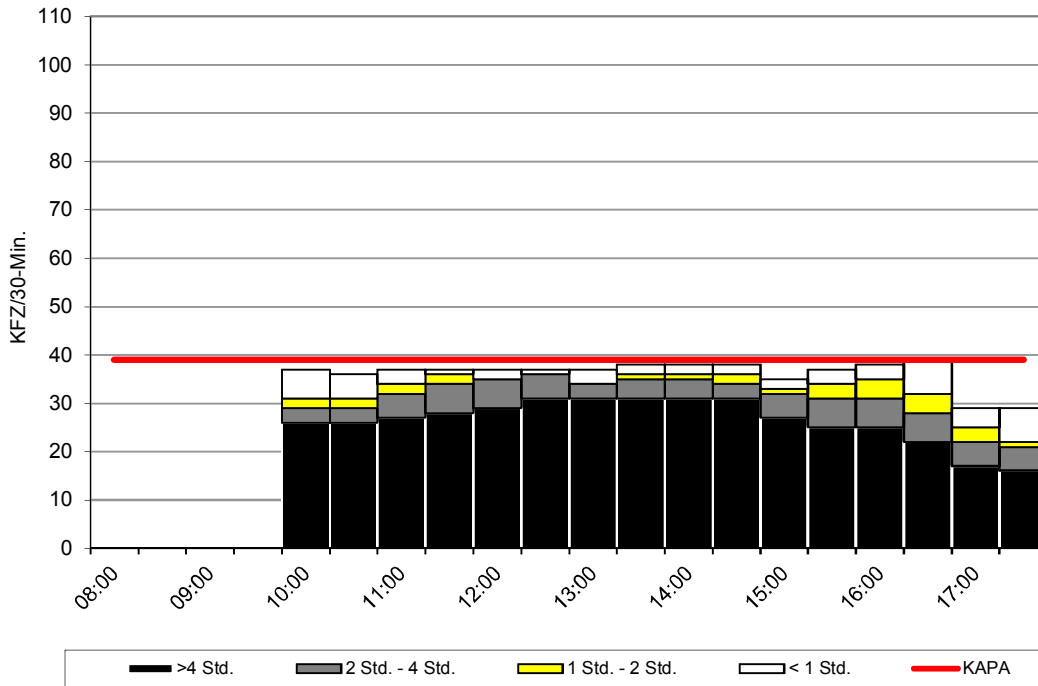


	Auslastung		davon Parkdauer							
			>4 Std.		2 Std. - 4 Std.		1 Std. - 2 Std.		< 1 Std.	
	abs.	rel.	abs.	rel.	abs.	rel.	abs.	rel.	abs.	rel.
08:00	0	0%	0	-%	0	-%	0	-%	0	-%
08:30	0	0%	0	-%	0	-%	0	-%	0	-%
09:00	0	0%	0	-%	0	-%	0	-%	0	-%
09:30	0	0%	0	-%	0	-%	0	-%	0	-%
10:00	12	75%	2	17%	2	17%	2	17%	6	50%
10:30	6	38%	2	33%	2	33%	2	33%	0	0%
11:00	8	50%	2	25%	3	38%	3	38%	0	0%
11:30	9	56%	2	22%	3	33%	2	22%	2	22%
12:00	10	63%	2	20%	3	30%	2	20%	3	30%
12:30	7	44%	3	43%	1	14%	1	14%	2	29%
13:00	11	69%	4	36%	2	18%	2	18%	3	27%
13:30	11	69%	4	36%	2	18%	1	9%	4	36%
14:00	7	44%	4	57%	1	14%	1	14%	1	14%
14:30	6	38%	4	67%	1	17%	0	0%	1	17%
15:00	5	31%	4	80%	1	20%	0	0%	0	0%
15:30	10	63%	4	40%	1	10%	2	20%	3	30%
16:00	9	56%	4	44%	1	11%	2	22%	2	22%
16:30	8	50%	3	38%	1	13%	2	25%	2	25%
17:00	9	56%	3	33%	0	0%	0	0%	6	67%
17:30	5	31%	3	60%	0	0%	0	0%	2	40%
durchschn.										
30-Min.-Wert	8	50%	3	38%	2	25%	1	13%	2	25%

Stadt Wolfratshausen

Parkraumerhebung

Park-/ Stellplatz: P7_1 P+R-Platz westlich der Bahn
 Zähltag: Do., 29.09.2016
 Erfassungszeit: 10:00 Uhr - 18:00 Uhr
 Darstellung: KFZ
 Stellplatzangebot: 39
 Bewirtschaftung: P+R

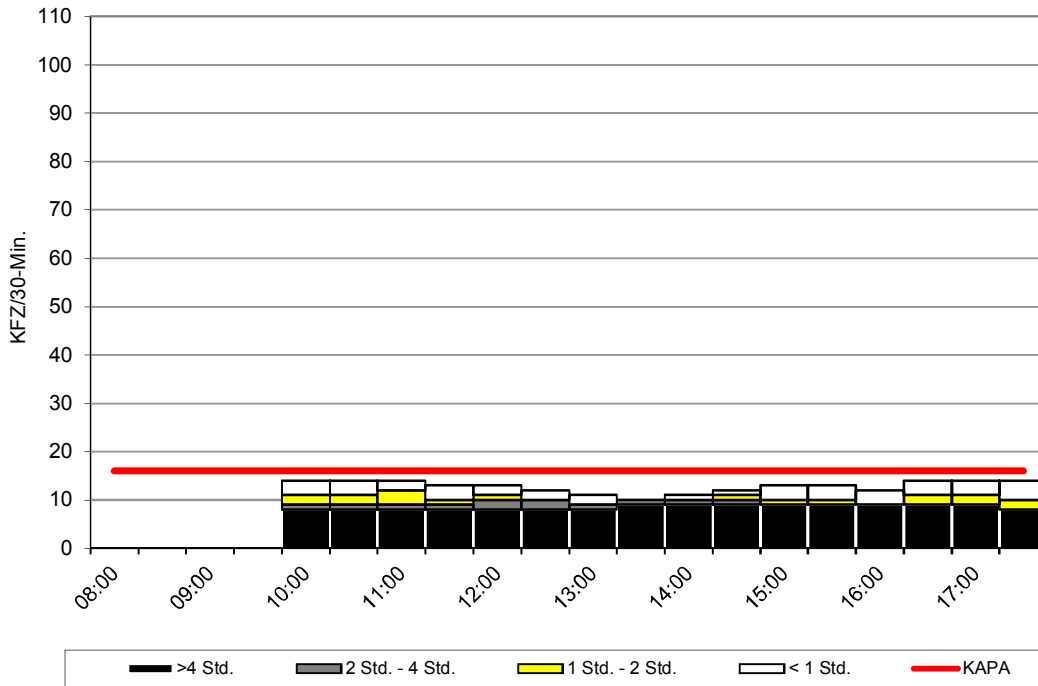


	Auslastung		davon Parkdauer							
			>4 Std.		2 Std. - 4 Std.		1 Std. - 2 Std.		< 1 Std.	
	abs.	rel.	abs.	rel.	abs.	rel.	abs.	rel.	abs.	rel.
08:00	0	0%	0	-%	0	-%	0	-%	0	-%
08:30	0	0%	0	-%	0	-%	0	-%	0	-%
09:00	0	0%	0	-%	0	-%	0	-%	0	-%
09:30	0	0%	0	-%	0	-%	0	-%	0	-%
10:00	37	95%	26	70%	3	8%	2	5%	6	16%
10:30	36	92%	26	72%	3	8%	2	6%	5	14%
11:00	37	95%	27	73%	5	14%	2	5%	3	8%
11:30	37	95%	28	76%	6	16%	2	5%	1	3%
12:00	37	95%	29	78%	6	16%	0	0%	2	5%
12:30	37	95%	31	84%	5	14%	0	0%	1	3%
13:00	37	95%	31	84%	3	8%	0	0%	3	8%
13:30	38	97%	31	82%	4	11%	1	3%	2	5%
14:00	38	97%	31	82%	4	11%	1	3%	2	5%
14:30	38	97%	31	82%	3	8%	2	5%	2	5%
15:00	35	90%	27	77%	5	14%	1	3%	2	6%
15:30	37	95%	25	68%	6	16%	3	8%	3	8%
16:00	38	97%	25	66%	6	16%	4	11%	3	8%
16:30	39	100%	22	56%	6	15%	4	10%	7	18%
17:00	29	74%	17	59%	5	17%	3	10%	4	14%
17:30	29	74%	16	55%	5	17%	1	3%	7	24%
durchschn.										
30-Min.-Wert	36	92%	26	72%	5	14%	2	6%	3	8%

Stadt Wolfratshausen

Parkraumerhebung

Park-/ Stellplatz: P7_2 Karwendelstr.
 Zähltag: Do., 29.09.2016
 Erfassungszeit: 10:00 Uhr - 18:00 Uhr
 Darstellung: KFZ
 Stellplatzangebot: 16
 Bewirtschaftung: Parkscheibe 2h

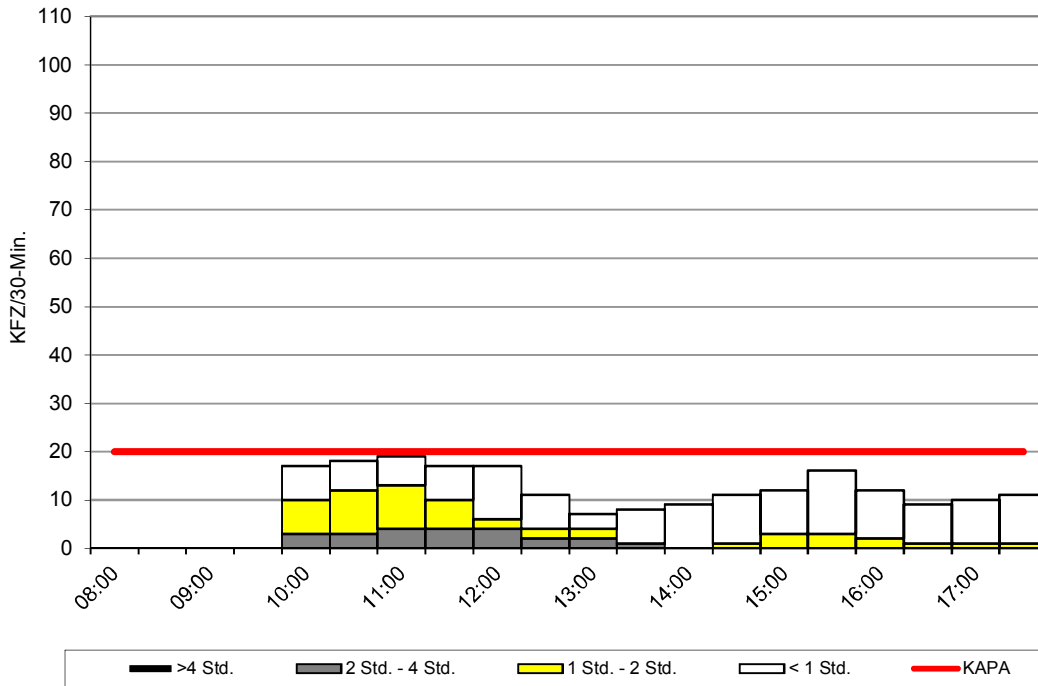


	Auslastung		davon Parkdauer							
			>4 Std.		2 Std. - 4 Std.		1 Std. - 2 Std.		< 1 Std.	
	abs.	rel.	abs.	rel.	abs.	rel.	abs.	rel.	abs.	rel.
08:00	0	0%	0	-%	0	-%	0	-%	0	-%
08:30	0	0%	0	-%	0	-%	0	-%	0	-%
09:00	0	0%	0	-%	0	-%	0	-%	0	-%
09:30	0	0%	0	-%	0	-%	0	-%	0	-%
10:00	14	88%	8	57%	1	7%	2	14%	3	21%
10:30	14	88%	8	57%	1	7%	2	14%	3	21%
11:00	14	88%	8	57%	1	7%	3	21%	2	14%
11:30	13	81%	8	62%	1	8%	1	8%	3	23%
12:00	13	81%	8	62%	2	15%	1	8%	2	15%
12:30	12	75%	8	67%	2	17%	0	0%	2	17%
13:00	11	69%	8	73%	1	9%	0	0%	2	18%
13:30	10	63%	9	90%	1	10%	0	0%	0	0%
14:00	11	69%	9	82%	1	9%	0	0%	1	9%
14:30	12	75%	9	75%	1	8%	1	8%	1	8%
15:00	13	81%	9	69%	0	0%	1	8%	3	23%
15:30	13	81%	9	69%	0	0%	1	8%	3	23%
16:00	12	75%	9	75%	0	0%	0	0%	3	25%
16:30	14	88%	9	64%	0	0%	2	14%	3	21%
17:00	14	88%	9	64%	0	0%	2	14%	3	21%
17:30	14	88%	8	57%	0	0%	2	14%	4	29%
durchschn.										
30-Min.-Wert	13	81%	9	69%	1	8%	1	8%	2	15%

Stadt Wolfratshausen

Parkraumerhebung

Park-/ Stellplatz: P7_3 Sauerlacher Str. (Finanzamt)
 Zähltag: Do., 29.09.2016
 Erfassungszeit: 10:00 Uhr - 18:00 Uhr
 Darstellung: KFZ
 Stellplatzangebot: 20
 Bewirtschaftung: Parkscheibe 2h

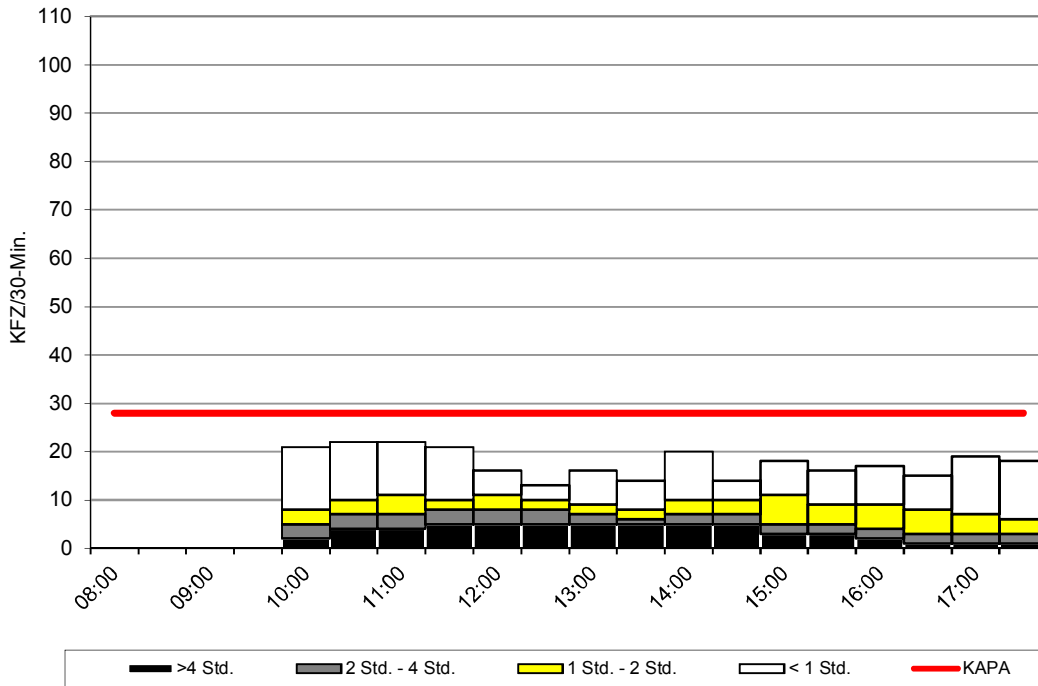


	Auslastung		davon Parkdauer							
			>4 Std.		2 Std. - 4 Std.		1 Std. - 2 Std.		< 1 Std.	
	abs.	rel.	abs.	rel.	abs.	rel.	abs.	rel.	abs.	rel.
08:00	0	0%	0	-%	0	-%	0	-%	0	-%
08:30	0	0%	0	-%	0	-%	0	-%	0	-%
09:00	0	0%	0	-%	0	-%	0	-%	0	-%
09:30	0	0%	0	-%	0	-%	0	-%	0	-%
10:00	17	85%	0	0%	3	18%	7	41%	7	41%
10:30	18	90%	0	0%	3	17%	9	50%	6	33%
11:00	19	95%	0	0%	4	21%	9	47%	6	32%
11:30	17	85%	0	0%	4	24%	6	35%	7	41%
12:00	17	85%	0	0%	4	24%	2	12%	11	65%
12:30	11	55%	0	0%	2	18%	2	18%	7	64%
13:00	7	35%	0	0%	2	29%	2	29%	3	43%
13:30	8	40%	0	0%	1	13%	0	0%	7	88%
14:00	9	45%	0	0%	0	0%	0	0%	9	100%
14:30	11	55%	0	0%	0	0%	1	9%	10	91%
15:00	12	60%	0	0%	0	0%	3	25%	9	75%
15:30	16	80%	0	0%	0	0%	3	19%	13	81%
16:00	12	60%	0	0%	0	0%	2	17%	10	83%
16:30	9	45%	0	0%	0	0%	1	11%	8	89%
17:00	10	50%	0	0%	0	0%	1	10%	9	90%
17:30	11	55%	0	0%	0	0%	1	9%	10	91%
durchschn. 30-Min.-Wert	13	65%	0	0%	1	8%	3	25%	8	67%

Stadt Wolfratshausen

Parkraumerhebung

Park-/ Stellplatz: P7_4 Sauerlacher Str. (Sparkasse)
 Zähltag: Do., 29.09.2016
 Erfassungszeit: 10:00 Uhr - 18:00 Uhr
 Darstellung: KFZ
 Stellplatzangebot: 28
 Bewirtschaftung: Parkscheibe 2h

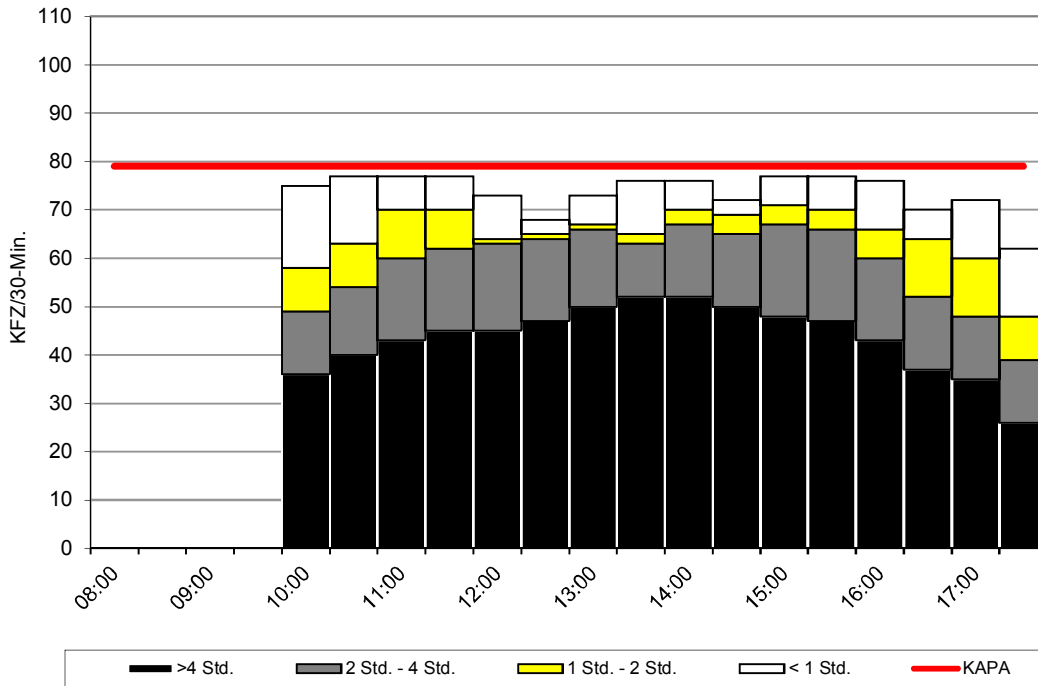


	Auslastung		davon Parkdauer							
			>4 Std.		2 Std. - 4 Std.		1 Std. - 2 Std.		< 1 Std.	
	abs.	rel.	abs.	rel.	abs.	rel.	abs.	rel.	abs.	rel.
08:00	0	0%	0	-%	0	-%	0	-%	0	-%
08:30	0	0%	0	-%	0	-%	0	-%	0	-%
09:00	0	0%	0	-%	0	-%	0	-%	0	-%
09:30	0	0%	0	-%	0	-%	0	-%	0	-%
10:00	21	75%	2	10%	3	14%	3	14%	13	62%
10:30	22	79%	4	18%	3	14%	3	14%	12	55%
11:00	22	79%	4	18%	3	14%	4	18%	11	50%
11:30	21	75%	5	24%	3	14%	2	10%	11	52%
12:00	16	57%	5	31%	3	19%	3	19%	5	31%
12:30	13	46%	5	38%	3	23%	2	15%	3	23%
13:00	16	57%	5	31%	2	13%	2	13%	7	44%
13:30	14	50%	5	36%	1	7%	2	14%	6	43%
14:00	20	71%	5	25%	2	10%	3	15%	10	50%
14:30	14	50%	5	36%	2	14%	3	21%	4	29%
15:00	18	64%	3	17%	2	11%	6	33%	7	39%
15:30	16	57%	3	19%	2	13%	4	25%	7	44%
16:00	17	61%	2	12%	2	12%	5	29%	8	47%
16:30	15	54%	1	7%	2	13%	5	33%	7	47%
17:00	19	68%	1	5%	2	11%	4	21%	12	63%
17:30	18	64%	1	6%	2	11%	3	17%	12	67%
durchschn. 30-Min.-Wert	18	64%	4	24%	2	12%	3	18%	8	47%

Stadt Wolfratshausen

Parkraumerhebung

Park-/ Stellplatz: P8_1 Parkplatz hinter Sparkasse
 Zähltag: Do., 29.09.2016
 Erfassungszeit: 10:00 Uhr - 18:00 Uhr
 Darstellung: KFZ
 Stellplatzangebot: 79
 Bewirtschaftung: ohne Einschränkung

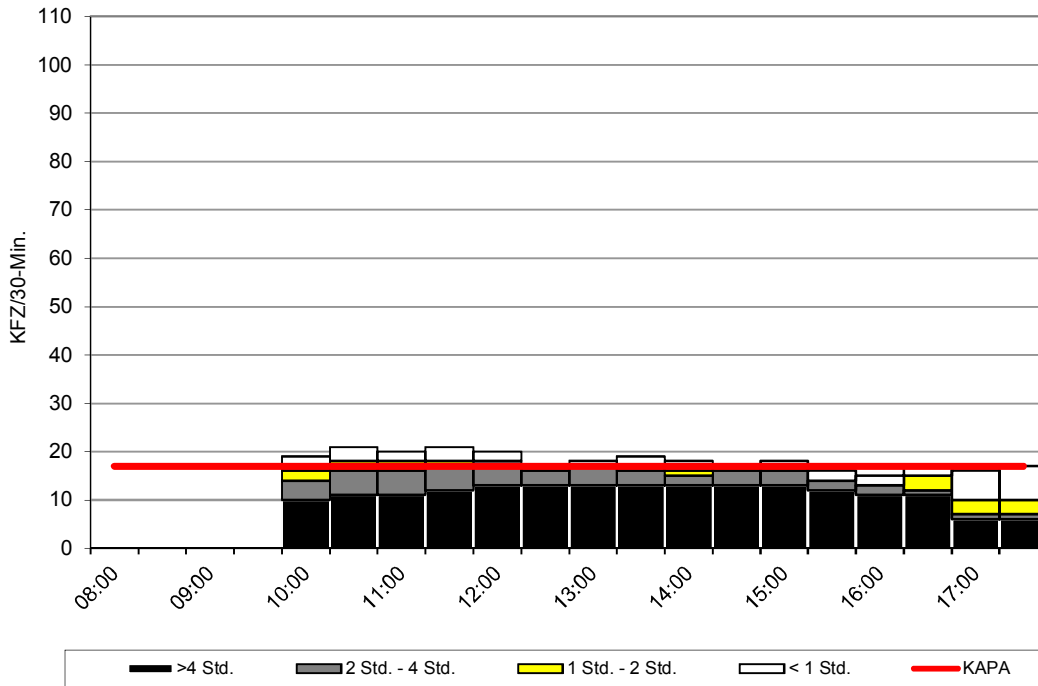


	Auslastung		davon Parkdauer							
			>4 Std.		2 Std. - 4 Std.		1 Std. - 2 Std.		< 1 Std.	
	abs.	rel.	abs.	rel.	abs.	rel.	abs.	rel.	abs.	rel.
08:00	0	0%	0	-%	0	-%	0	-%	0	-%
08:30	0	0%	0	-%	0	-%	0	-%	0	-%
09:00	0	0%	0	-%	0	-%	0	-%	0	-%
09:30	0	0%	0	-%	0	-%	0	-%	0	-%
10:00	75	95%	36	48%	13	17%	9	12%	17	23%
10:30	77	97%	40	52%	14	18%	9	12%	14	18%
11:00	77	97%	43	56%	17	22%	10	13%	7	9%
11:30	77	97%	45	58%	17	22%	8	10%	7	9%
12:00	73	92%	45	62%	18	25%	1	1%	9	12%
12:30	68	86%	47	69%	17	25%	1	1%	3	4%
13:00	73	92%	50	68%	16	22%	1	1%	6	8%
13:30	76	96%	52	68%	11	14%	2	3%	11	14%
14:00	76	96%	52	68%	15	20%	3	4%	6	8%
14:30	72	91%	50	69%	15	21%	4	6%	3	4%
15:00	77	97%	48	62%	19	25%	4	5%	6	8%
15:30	77	97%	47	61%	19	25%	4	5%	7	9%
16:00	76	96%	43	57%	17	22%	6	8%	10	13%
16:30	70	89%	37	53%	15	21%	12	17%	6	9%
17:00	72	91%	35	49%	13	18%	12	17%	12	17%
17:30	62	78%	26	42%	13	21%	9	15%	14	23%
durchschn.										
30-Min.-Wert	74	94%	44	59%	16	21%	6	8%	9	12%

Stadt Wolfratshausen

Parkraumerhebung

Park-/ Stellplatz: P8_2 Hammerschmiedweg
 Zähltag: Do., 29.09.2016
 Erfassungszeit: 10:00 Uhr - 18:00 Uhr
 Darstellung: KFZ
 Stellplatzangebot: 17
 Bewirtschaftung: ohne Einschränkung

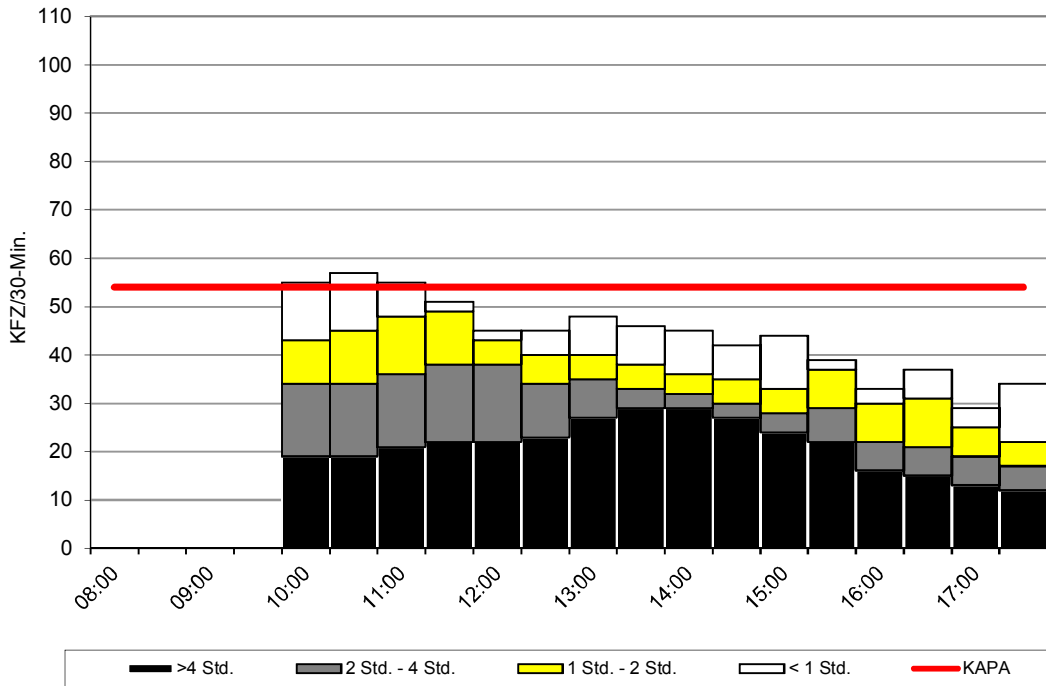


	Auslastung		davon Parkdauer							
			>4 Std.		2 Std. - 4 Std.		1 Std. - 2 Std.		< 1 Std.	
	abs.	rel.	abs.	rel.	abs.	rel.	abs.	rel.	abs.	rel.
08:00	0	0%	0	-%	0	-%	0	-%	0	-%
08:30	0	0%	0	-%	0	-%	0	-%	0	-%
09:00	0	0%	0	-%	0	-%	0	-%	0	-%
09:30	0	0%	0	-%	0	-%	0	-%	0	-%
10:00	19	112%	10	53%	4	21%	2	11%	3	16%
10:30	21	124%	11	52%	5	24%	2	10%	3	14%
11:00	20	118%	11	55%	5	25%	2	10%	2	10%
11:30	21	124%	12	57%	5	24%	1	5%	3	14%
12:00	20	118%	13	65%	5	25%	0	0%	2	10%
12:30	17	100%	13	76%	3	18%	0	0%	1	6%
13:00	18	106%	13	72%	4	22%	0	0%	1	6%
13:30	19	112%	13	68%	3	16%	0	0%	3	16%
14:00	18	106%	13	72%	2	11%	1	6%	2	11%
14:30	17	100%	13	76%	3	18%	1	6%	0	0%
15:00	18	106%	13	72%	3	17%	1	6%	1	6%
15:30	16	94%	12	75%	2	13%	0	0%	2	13%
16:00	15	88%	11	73%	2	13%	0	0%	2	13%
16:30	17	100%	11	65%	1	6%	3	18%	2	12%
17:00	16	94%	6	38%	1	6%	3	19%	6	38%
17:30	17	100%	6	35%	1	6%	3	18%	7	41%
durchschn. 30-Min.-Wert	18	106%	11	61%	3	17%	1	6%	3	17%

Stadt Wolfratshausen

Parkraumerhebung

Park-/ Stellplatz: P9_1 Parkplatz Krankenhaus
 Zähltag: Do., 29.09.2016
 Erfassungszeit: 10:00 Uhr - 18:00 Uhr
 Darstellung: KFZ
 Stellplatzangebot: 54
 Bewirtschaftung: Parkscheibe 3h

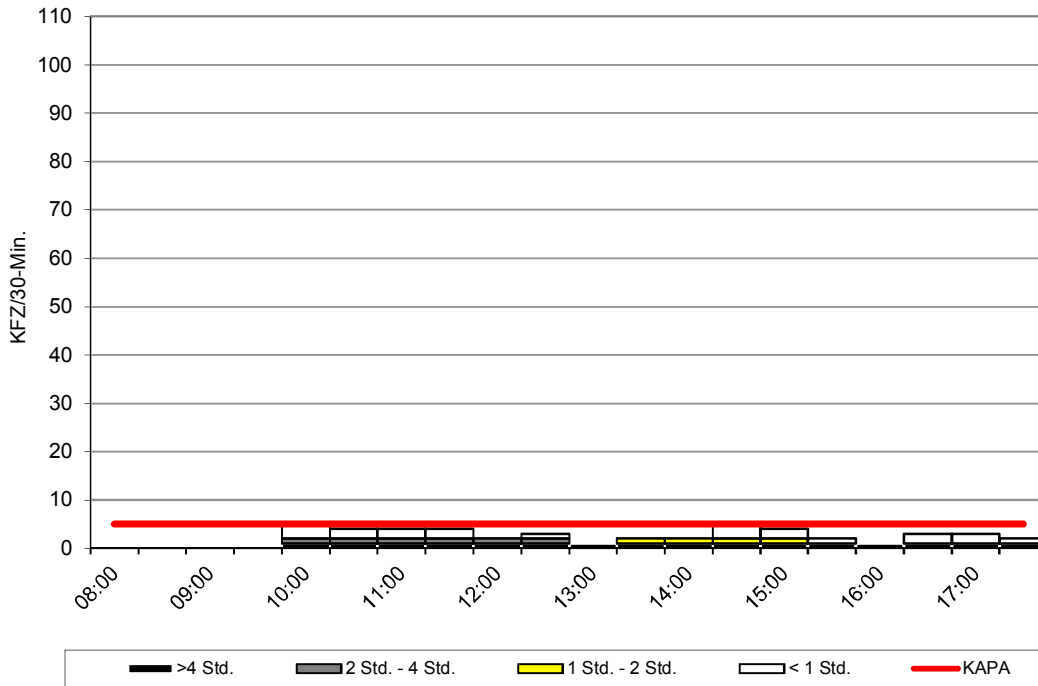


	Auslastung		davon Parkdauer							
			>4 Std.		2 Std. - 4 Std.		1 Std. - 2 Std.		< 1 Std.	
	abs.	rel.	abs.	rel.	abs.	rel.	abs.	rel.	abs.	rel.
08:00	0	0%	0	-%	0	-%	0	-%	0	-%
08:30	0	0%	0	-%	0	-%	0	-%	0	-%
09:00	0	0%	0	-%	0	-%	0	-%	0	-%
09:30	0	0%	0	-%	0	-%	0	-%	0	-%
10:00	55	102%	19	35%	15	27%	9	16%	12	22%
10:30	57	106%	19	33%	15	26%	11	19%	12	21%
11:00	55	102%	21	38%	15	27%	12	22%	7	13%
11:30	51	94%	22	43%	16	31%	11	22%	2	4%
12:00	45	83%	22	49%	16	36%	5	11%	2	4%
12:30	45	83%	23	51%	11	24%	6	13%	5	11%
13:00	48	89%	27	56%	8	17%	5	10%	8	17%
13:30	46	85%	29	63%	4	9%	5	11%	8	17%
14:00	45	83%	29	64%	3	7%	4	9%	9	20%
14:30	42	78%	27	64%	3	7%	5	12%	7	17%
15:00	44	81%	24	55%	4	9%	5	11%	11	25%
15:30	39	72%	22	56%	7	18%	8	21%	2	5%
16:00	33	61%	16	48%	6	18%	8	24%	3	9%
16:30	37	69%	15	41%	6	16%	10	27%	6	16%
17:00	29	54%	13	45%	6	21%	6	21%	4	14%
17:30	34	63%	12	35%	5	15%	5	15%	12	35%
durchschn. 30-Min.-Wert	44	81%	21	48%	9	20%	7	16%	7	16%

Stadt Wolfratshausen

Parkraumerhebung

Park-/ Stellplatz: P9_2 Moosbauerweg
 Zähltag: Do., 29.09.2016
 Erfassungszeit: 10:00 Uhr - 18:00 Uhr
 Darstellung: KFZ
 Stellplatzangebot: 5
 Bewirtschaftung: Parkscheibe 2h

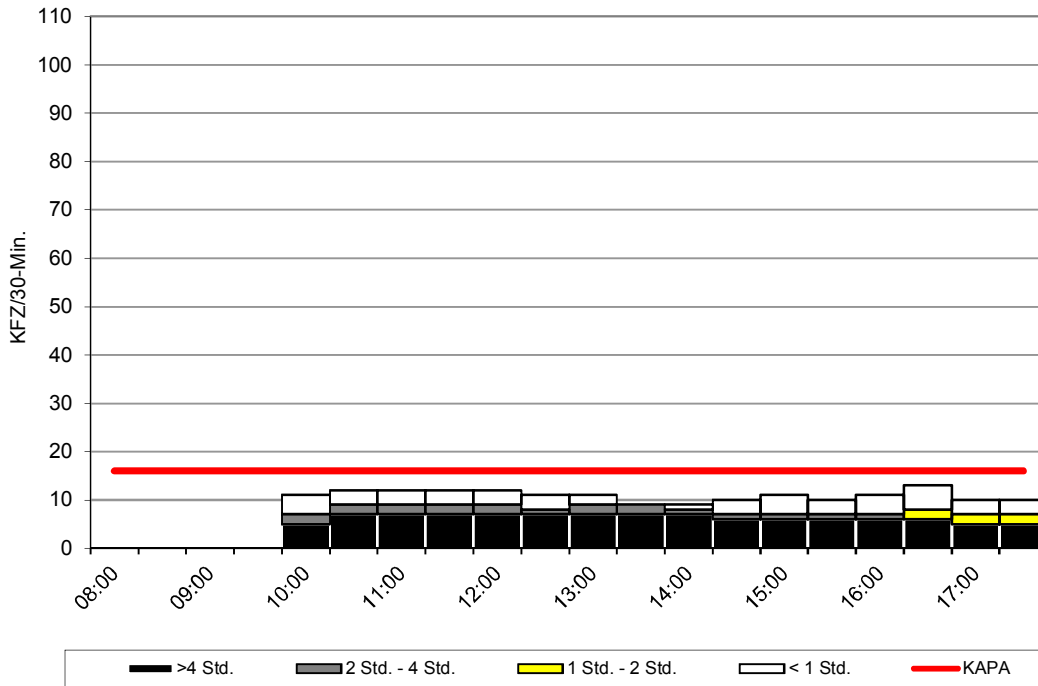


	Auslastung		davon Parkdauer							
			>4 Std.		2 Std. - 4 Std.		1 Std. - 2 Std.		< 1 Std.	
	abs.	rel.	abs.	rel.	abs.	rel.	abs.	rel.	abs.	rel.
08:00	0	0%	0	-%	0	-%	0	-%	0	-%
08:30	0	0%	0	-%	0	-%	0	-%	0	-%
09:00	0	0%	0	-%	0	-%	0	-%	0	-%
09:30	0	0%	0	-%	0	-%	0	-%	0	-%
10:00	5	100%	1	20%	1	20%	0	0%	3	60%
10:30	4	80%	1	25%	1	25%	0	0%	2	50%
11:00	4	80%	1	25%	1	25%	0	0%	2	50%
11:30	4	80%	1	25%	1	25%	0	0%	2	50%
12:00	2	40%	1	50%	1	50%	0	0%	0	0%
12:30	3	60%	1	33%	1	33%	0	0%	1	33%
13:00	1	20%	1	100%	0	0%	0	0%	0	0%
13:30	2	40%	1	50%	0	0%	1	50%	0	0%
14:00	2	40%	1	50%	0	0%	1	50%	0	0%
14:30	5	100%	1	20%	0	0%	1	20%	3	60%
15:00	4	80%	1	25%	0	0%	1	25%	2	50%
15:30	2	40%	1	50%	0	0%	0	0%	1	50%
16:00	1	20%	1	100%	0	0%	0	0%	0	0%
16:30	3	60%	1	33%	0	0%	0	0%	2	67%
17:00	3	60%	1	33%	0	0%	0	0%	2	67%
17:30	2	40%	1	50%	0	0%	0	0%	1	50%
durchschn. 30-Min.-Wert	3	60%	1	50%	0	0%	0	0%	1	50%

Stadt Wolfratshausen

Parkraumerhebung

Park-/ Stellplatz: P9_3 Sauerlacher Str.
 Zähltag: Do., 29.09.2016
 Erfassungszeit: 10:00 Uhr - 18:00 Uhr
 Darstellung: KFZ
 Stellplatzangebot: 16
 Bewirtschaftung: Parkscheibe 2h

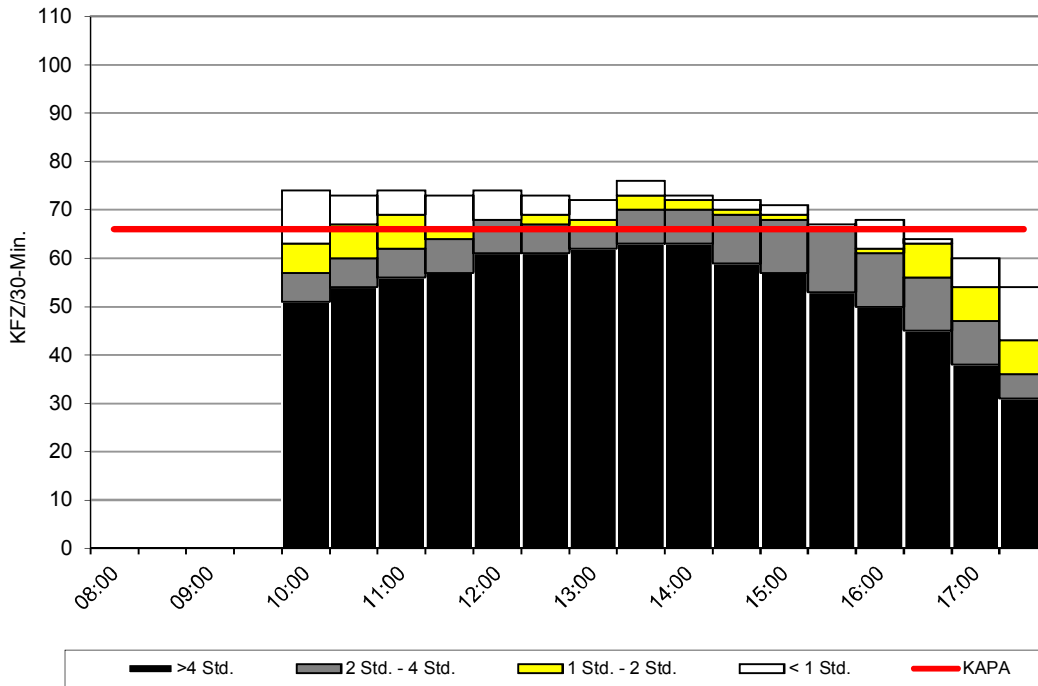


	Auslastung		davon Parkdauer							
			>4 Std.		2 Std. - 4 Std.		1 Std. - 2 Std.		< 1 Std.	
	abs.	rel.	abs.	rel.	abs.	rel.	abs.	rel.	abs.	rel.
08:00	0	0%	0	-%	0	-%	0	-%	0	-%
08:30	0	0%	0	-%	0	-%	0	-%	0	-%
09:00	0	0%	0	-%	0	-%	0	-%	0	-%
09:30	0	0%	0	-%	0	-%	0	-%	0	-%
10:00	11	69%	5	45%	2	18%	0	0%	4	36%
10:30	12	75%	7	58%	2	17%	0	0%	3	25%
11:00	12	75%	7	58%	2	17%	0	0%	3	25%
11:30	12	75%	7	58%	2	17%	0	0%	3	25%
12:00	12	75%	7	58%	2	17%	0	0%	3	25%
12:30	11	69%	7	64%	1	9%	0	0%	3	27%
13:00	11	69%	7	64%	2	18%	0	0%	2	18%
13:30	9	56%	7	78%	2	22%	0	0%	0	0%
14:00	9	56%	7	78%	1	11%	0	0%	1	11%
14:30	10	63%	6	60%	1	10%	0	0%	3	30%
15:00	11	69%	6	55%	1	9%	0	0%	4	36%
15:30	10	63%	6	60%	1	10%	0	0%	3	30%
16:00	11	69%	6	55%	1	9%	0	0%	4	36%
16:30	13	81%	6	46%	0	0%	2	15%	5	38%
17:00	10	63%	5	50%	0	0%	2	20%	3	30%
17:30	10	63%	5	50%	0	0%	2	20%	3	30%
durchschn. 30-Min.-Wert	11	69%	6	60%	1	10%	0	0%	3	30%

Stadt Wolfratshausen

Parkraumerhebung

Park-/ Stellplatz: P10_1 P+R-Platz östlich der Bahn
 Zähltag: Do., 29.09.2016
 Erfassungszeit: 10:00 Uhr - 18:00 Uhr
 Darstellung: KFZ
 Stellplatzangebot: 66
 Bewirtschaftung: P+R

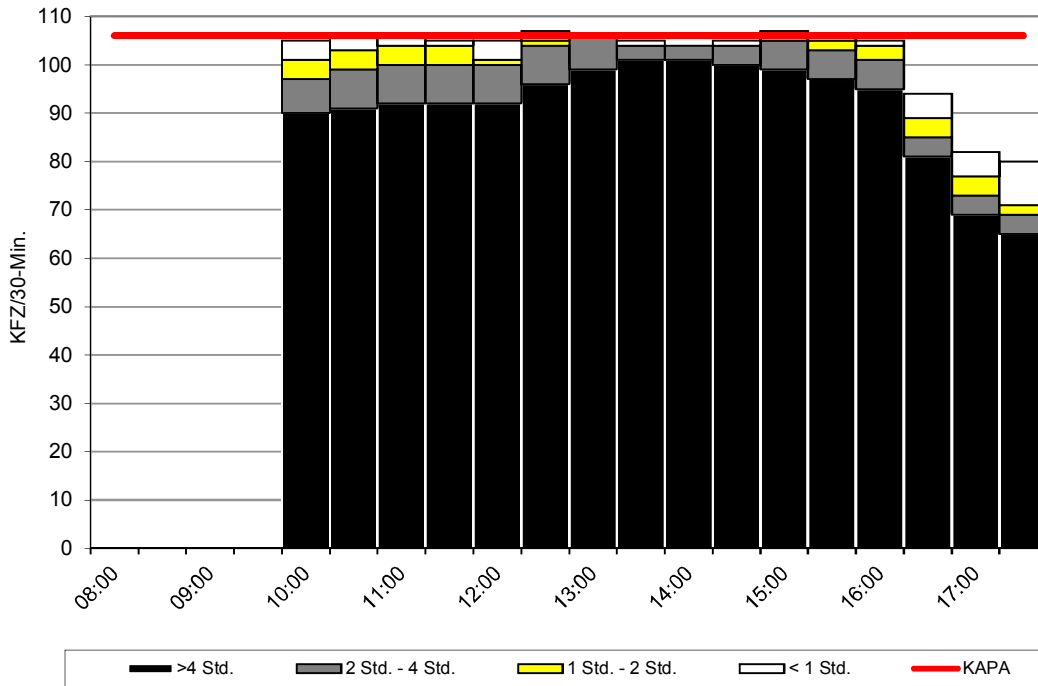


	Auslastung		davon Parkdauer							
			>4 Std.		2 Std. - 4 Std.		1 Std. - 2 Std.		< 1 Std.	
	abs.	rel.	abs.	rel.	abs.	rel.	abs.	rel.	abs.	rel.
08:00	0	0%	0	-%	0	-%	0	-%	0	-%
08:30	0	0%	0	-%	0	-%	0	-%	0	-%
09:00	0	0%	0	-%	0	-%	0	-%	0	-%
09:30	0	0%	0	-%	0	-%	0	-%	0	-%
10:00	74	112%	51	69%	6	8%	6	8%	11	15%
10:30	73	111%	54	74%	6	8%	7	10%	6	8%
11:00	74	112%	56	76%	6	8%	7	9%	5	7%
11:30	73	111%	57	78%	7	10%	2	3%	7	10%
12:00	74	112%	61	82%	7	9%	0	0%	6	8%
12:30	73	111%	61	84%	6	8%	2	3%	4	5%
13:00	72	109%	62	86%	4	6%	2	3%	4	6%
13:30	76	115%	63	83%	7	9%	3	4%	3	4%
14:00	73	111%	63	86%	7	10%	2	3%	1	1%
14:30	72	109%	59	82%	10	14%	1	1%	2	3%
15:00	71	108%	57	80%	11	15%	1	1%	2	3%
15:30	67	102%	53	79%	13	19%	0	0%	1	1%
16:00	68	103%	50	74%	11	16%	1	1%	6	9%
16:30	64	97%	45	70%	11	17%	7	11%	1	2%
17:00	60	91%	38	63%	9	15%	7	12%	6	10%
17:30	54	82%	31	57%	5	9%	7	13%	11	20%
durchschn.										
30-Min.-Wert	70	106%	54	77%	8	11%	3	4%	5	7%

Stadt Wolfratshausen

Parkraumerhebung

Park-/ Stellplatz: P11_1 P+R-Platz westlich der Bahn (südlicher Teilabschnitt)
 Zähltag: Do., 29.09.2016
 Erfassungszeit: 10:00 Uhr - 18:00 Uhr
 Darstellung: KFZ
 Stellplatzangebot: 106
 Bewirtschaftung: P+R

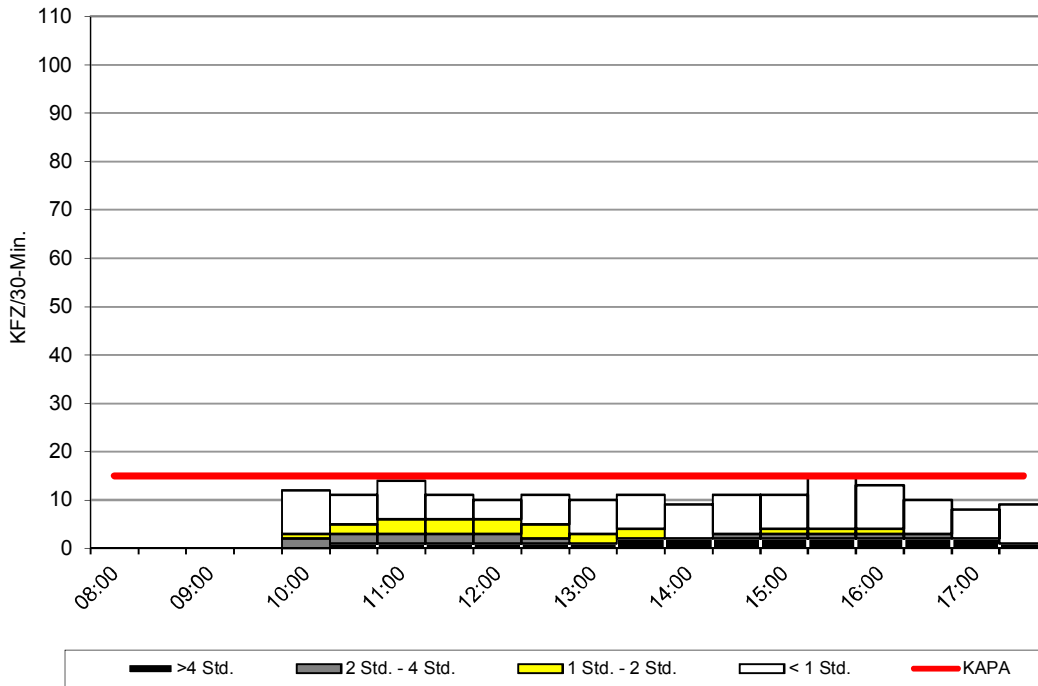


	Auslastung		davon Parkdauer							
			>4 Std.		2 Std. - 4 Std.		1 Std. - 2 Std.		< 1 Std.	
	abs.	rel.	abs.	rel.	abs.	rel.	abs.	rel.	abs.	rel.
08:00	0	0%	0	-%	0	-%	0	-%	0	-%
08:30	0	0%	0	-%	0	-%	0	-%	0	-%
09:00	0	0%	0	-%	0	-%	0	-%	0	-%
09:30	0	0%	0	-%	0	-%	0	-%	0	-%
10:00	105	99%	90	86%	7	7%	4	4%	4	4%
10:30	106	100%	91	86%	8	8%	4	4%	3	3%
11:00	106	100%	92	87%	8	8%	4	4%	2	2%
11:30	105	99%	92	88%	8	8%	4	4%	1	1%
12:00	105	99%	92	88%	8	8%	1	1%	4	4%
12:30	107	101%	96	90%	8	7%	1	1%	2	2%
13:00	106	100%	99	93%	7	7%	0	0%	0	0%
13:30	105	99%	101	96%	3	3%	0	0%	1	1%
14:00	104	98%	101	97%	3	3%	0	0%	0	0%
14:30	105	99%	100	95%	4	4%	0	0%	1	1%
15:00	107	101%	99	93%	6	6%	1	1%	1	1%
15:30	106	100%	97	92%	6	6%	2	2%	1	1%
16:00	105	99%	95	90%	6	6%	3	3%	1	1%
16:30	94	89%	81	86%	4	4%	4	4%	5	5%
17:00	82	77%	69	84%	4	5%	4	5%	5	6%
17:30	80	75%	65	81%	4	5%	2	3%	9	11%
durchschn. 30-Min.-Wert	102	96%	91	89%	6	6%	2	2%	3	3%

Stadt Wolfratshausen

Parkraumerhebung

Park-/ Stellplatz: P12_1 Bahnhofstr. (zw. Am Floßkanal und Bahnhof)
 Zähltag: Do., 29.09.2016
 Erfassungszeit: 10:00 Uhr - 18:00 Uhr
 Darstellung: KFZ
 Stellplatzangebot: 15
 Bewirtschaftung: Parkscheibe 1h

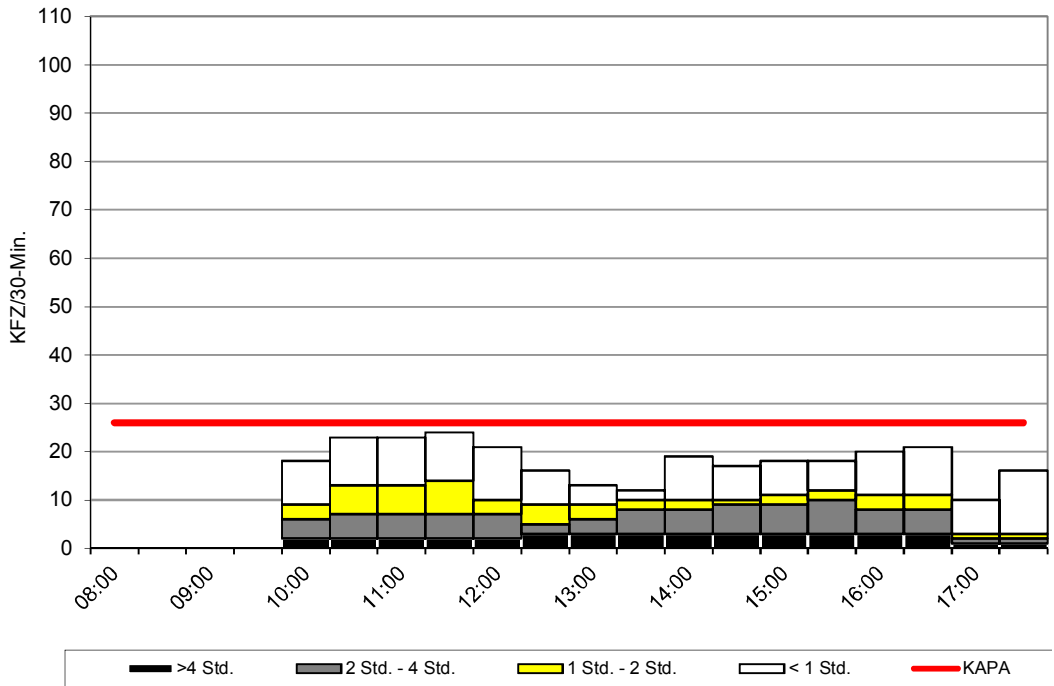


	Auslastung		davon Parkdauer							
			>4 Std.		2 Std. - 4 Std.		1 Std. - 2 Std.		< 1 Std.	
	abs.	rel.	abs.	rel.	abs.	rel.	abs.	rel.	abs.	rel.
08:00	0	0%	0	-%	0	-%	0	-%	0	-%
08:30	0	0%	0	-%	0	-%	0	-%	0	-%
09:00	0	0%	0	-%	0	-%	0	-%	0	-%
09:30	0	0%	0	-%	0	-%	0	-%	0	-%
10:00	12	80%	0	0%	2	17%	1	8%	9	75%
10:30	11	73%	1	9%	2	18%	2	18%	6	55%
11:00	14	93%	1	7%	2	14%	3	21%	8	57%
11:30	11	73%	1	9%	2	18%	3	27%	5	45%
12:00	10	67%	1	10%	2	20%	3	30%	4	40%
12:30	11	73%	1	9%	1	9%	3	27%	6	55%
13:00	10	67%	1	10%	0	0%	2	20%	7	70%
13:30	11	73%	2	18%	0	0%	2	18%	7	64%
14:00	9	60%	2	22%	0	0%	0	0%	7	78%
14:30	11	73%	2	18%	1	9%	0	0%	8	73%
15:00	11	73%	2	18%	1	9%	1	9%	7	64%
15:30	15	100%	2	13%	1	7%	1	7%	11	73%
16:00	13	87%	2	15%	1	8%	1	8%	9	69%
16:30	10	67%	2	20%	1	10%	0	0%	7	70%
17:00	8	53%	2	25%	0	0%	0	0%	6	75%
17:30	9	60%	1	11%	0	0%	0	0%	8	89%
durchschn. 30-Min.-Wert	11	73%	1	10%	1	10%	1	10%	7	70%

Stadt Wolfratshausen

Parkraumerhebung

Park-/ Stellplatz: P12_2 Bahnhofstr.
 Zähltag: Do., 29.09.2016
 Erfassungszeit: 10:00 Uhr - 18:00 Uhr
 Darstellung: KFZ
 Stellplatzangebot: 26
 Bewirtschaftung: Parkscheibe 2h

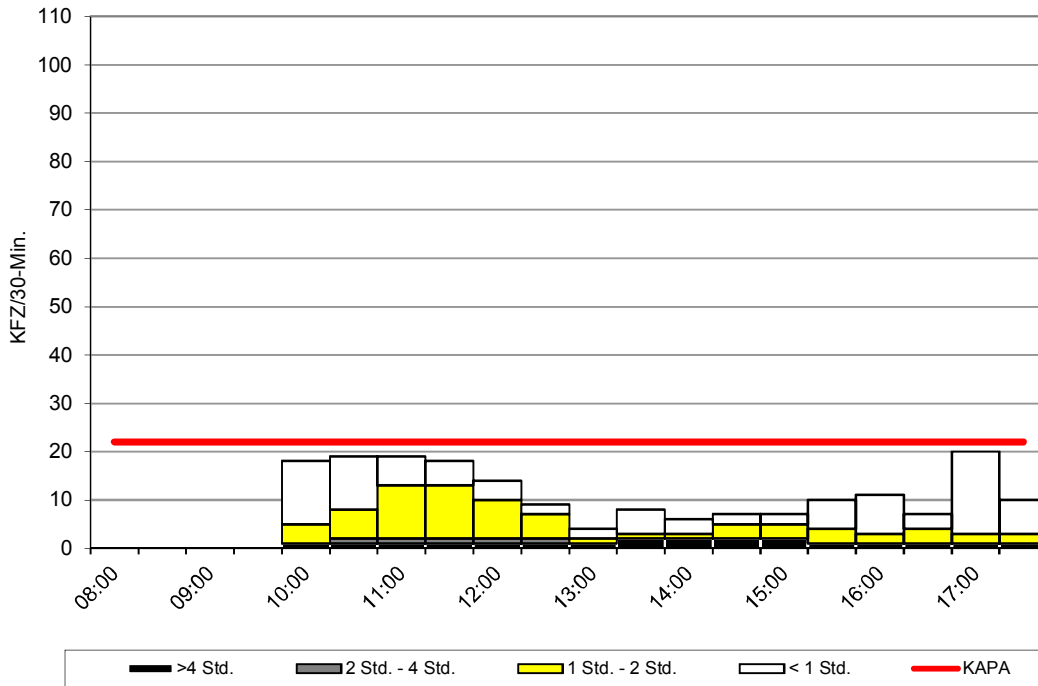


	Auslastung		davon Parkdauer							
			>4 Std.		2 Std. - 4 Std.		1 Std. - 2 Std.		< 1 Std.	
	abs.	rel.	abs.	rel.	abs.	rel.	abs.	rel.	abs.	rel.
08:00	0	0%	0	-%	0	-%	0	-%	0	-%
08:30	0	0%	0	-%	0	-%	0	-%	0	-%
09:00	0	0%	0	-%	0	-%	0	-%	0	-%
09:30	0	0%	0	-%	0	-%	0	-%	0	-%
10:00	18	69%	2	11%	4	22%	3	17%	9	50%
10:30	23	88%	2	9%	5	22%	6	26%	10	43%
11:00	23	88%	2	9%	5	22%	6	26%	10	43%
11:30	24	92%	2	8%	5	21%	7	29%	10	42%
12:00	21	81%	2	10%	5	24%	3	14%	11	52%
12:30	16	62%	3	19%	2	13%	4	25%	7	44%
13:00	13	50%	3	23%	3	23%	3	23%	4	31%
13:30	12	46%	3	25%	5	42%	2	17%	2	17%
14:00	19	73%	3	16%	5	26%	2	11%	9	47%
14:30	17	65%	3	18%	6	35%	1	6%	7	41%
15:00	18	69%	3	17%	6	33%	2	11%	7	39%
15:30	18	69%	3	17%	7	39%	2	11%	6	33%
16:00	20	77%	3	15%	5	25%	3	15%	9	45%
16:30	21	81%	3	14%	5	24%	3	14%	10	48%
17:00	10	38%	1	10%	1	10%	1	10%	7	70%
17:30	16	62%	1	6%	1	6%	1	6%	13	81%
durchschn. 30-Min.-Wert	18	69%	2	12%	4	24%	3	18%	8	47%

Stadt Wolfratshausen

Parkraumerhebung

Park-/ Stellplatz: P12_3 Am Floßkanal
 Zähltag: Do., 29.09.2016
 Erfassungszeit: 10:00 Uhr - 18:00 Uhr
 Darstellung: KFZ
 Stellplatzangebot: 22
 Bewirtschaftung: Parkscheibe 2h

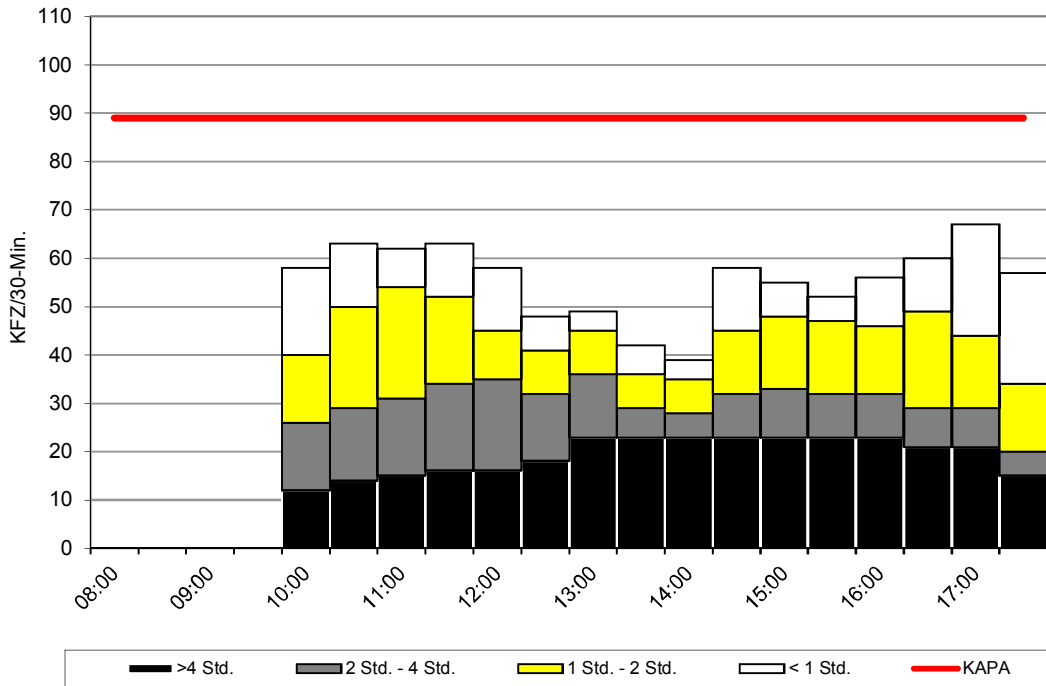


	Auslastung		davon Parkdauer							
			>4 Std.		2 Std. - 4 Std.		1 Std. - 2 Std.		< 1 Std.	
	abs.	rel.	abs.	rel.	abs.	rel.	abs.	rel.	abs.	rel.
08:00	0	0%	0	-%	0	-%	0	-%	0	-%
08:30	0	0%	0	-%	0	-%	0	-%	0	-%
09:00	0	0%	0	-%	0	-%	0	-%	0	-%
09:30	0	0%	0	-%	0	-%	0	-%	0	-%
10:00	18	82%	1	6%	0	0%	4	22%	13	72%
10:30	19	86%	1	5%	1	5%	6	32%	11	58%
11:00	19	86%	1	5%	1	5%	11	58%	6	32%
11:30	18	82%	1	6%	1	6%	11	61%	5	28%
12:00	14	64%	1	7%	1	7%	8	57%	4	29%
12:30	9	41%	1	11%	1	11%	5	56%	2	22%
13:00	4	18%	1	25%	0	0%	1	25%	2	50%
13:30	8	36%	2	25%	0	0%	1	13%	5	63%
14:00	6	27%	2	33%	0	0%	1	17%	3	50%
14:30	7	32%	2	29%	0	0%	3	43%	2	29%
15:00	7	32%	2	29%	0	0%	3	43%	2	29%
15:30	10	45%	1	10%	0	0%	3	30%	6	60%
16:00	11	50%	1	9%	0	0%	2	18%	8	73%
16:30	7	32%	1	14%	0	0%	3	43%	3	43%
17:00	20	91%	1	5%	0	0%	2	10%	17	85%
17:30	10	45%	1	10%	0	0%	2	20%	7	70%
durchschn. 30-Min.-Wert	12	55%	1	9%	0	0%	4	36%	6	55%

Stadt Wolfratshausen

Parkraumerhebung

Park-/ Stellplatz: P13_1 Parkplatz Altstadt
 Zähltag: Do., 29.09.2016
 Erfassungszeit: 10:00 Uhr - 18:00 Uhr
 Darstellung: KFZ
 Stellplatzangebot: 89
 Bewirtschaftung: Parkschein (kostenpflichtig)



	Auslastung		davon Parkdauer							
			>4 Std.		2 Std. - 4 Std.		1 Std. - 2 Std.		< 1 Std.	
	abs.	rel.	abs.	rel.	abs.	rel.	abs.	rel.	abs.	rel.
08:00	0	0%	0	-%	0	-%	0	-%	0	-%
08:30	0	0%	0	-%	0	-%	0	-%	0	-%
09:00	0	0%	0	-%	0	-%	0	-%	0	-%
09:30	0	0%	0	-%	0	-%	0	-%	0	-%
10:00	58	65%	12	21%	14	24%	14	24%	18	31%
10:30	63	71%	14	22%	15	24%	21	33%	13	21%
11:00	62	70%	15	24%	16	26%	23	37%	8	13%
11:30	63	71%	16	25%	18	29%	18	29%	11	17%
12:00	58	65%	16	28%	19	33%	10	17%	13	22%
12:30	48	54%	18	38%	14	29%	9	19%	7	15%
13:00	49	55%	23	47%	13	27%	9	18%	4	8%
13:30	42	47%	23	55%	6	14%	7	17%	6	14%
14:00	39	44%	23	59%	5	13%	7	18%	4	10%
14:30	58	65%	23	40%	9	16%	13	22%	13	22%
15:00	55	62%	23	42%	10	18%	15	27%	7	13%
15:30	52	58%	23	44%	9	17%	15	29%	5	10%
16:00	56	63%	23	41%	9	16%	14	25%	10	18%
16:30	60	67%	21	35%	8	13%	20	33%	11	18%
17:00	67	75%	21	31%	8	12%	15	22%	23	34%
17:30	57	64%	15	26%	5	9%	14	25%	23	40%
durchschn.										
30-Min.-Wert	55	62%	19	35%	11	20%	14	25%	11	20%

ANLAGEN

2. Pläne der Parkraumuntersuchung

Bestandsaufnahme

Parkraumbewirtschaftung

Parkdauerbeschränkung

Mittlere Auslastung Erhebungszeitraum (10:00 Uhr – 18:00 Uhr)

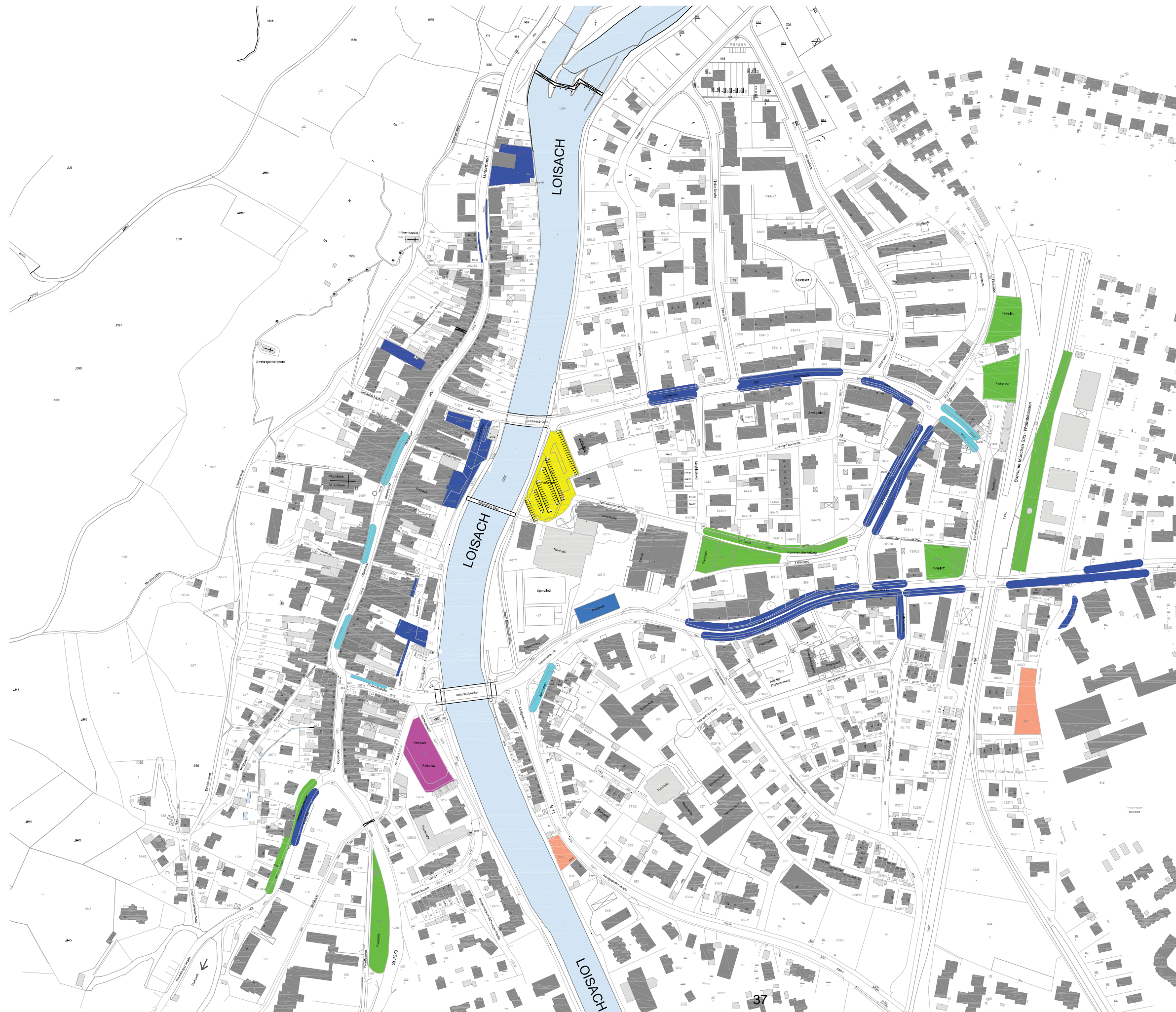
Mittlere Auslastung vormittags (10:00 Uhr – 13:30 Uhr)

Mittlere Auslastung nachmittags (13:30 Uhr – 18:00 Uhr)

STADT WOLFRATSHAUSEN

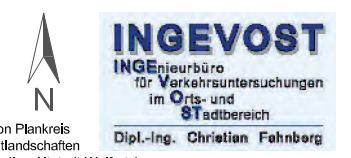
Parkraumuntersuchung

Parkdauerbeschränkung







- Frei Parken
- 1 Stunde
- 2 Stunden
- 2 Stunden ab 14 Uhr
- 3 Stunden
- 10 Stunden
- Unbegrenzt

Stand: Oktober 2016
Plangrundlage bereitgestellt von Plankreis
Datenquelle: Arbeitskreis Stadtlandschaften
des Verelns lebendige Altstadt Wolfratshausen



Mittlere Auslastung
vormittags
(10:00 Uhr - 13:30 Uhr)

-  Sehr starker Parkdruck
100% < mittl. Auslastung
-  Starker Parkdruck
75% < mittl. Auslastung <= 100%
-  Mäßiger Parkdruck
50% < mittl. Auslastung <= 75%
-  Geringer Parkdruck
1% < mittl. Auslastung <= 50%



